

Standard Features of the DC-1 Blood Drying Cabinet

Designed and developed by DSM for the needs of evidence handling personnel, the DC-1 Blood Drying Cabinet controls access while air drying blood and biological evidence.



DC-1 Blood Drying Cabinet

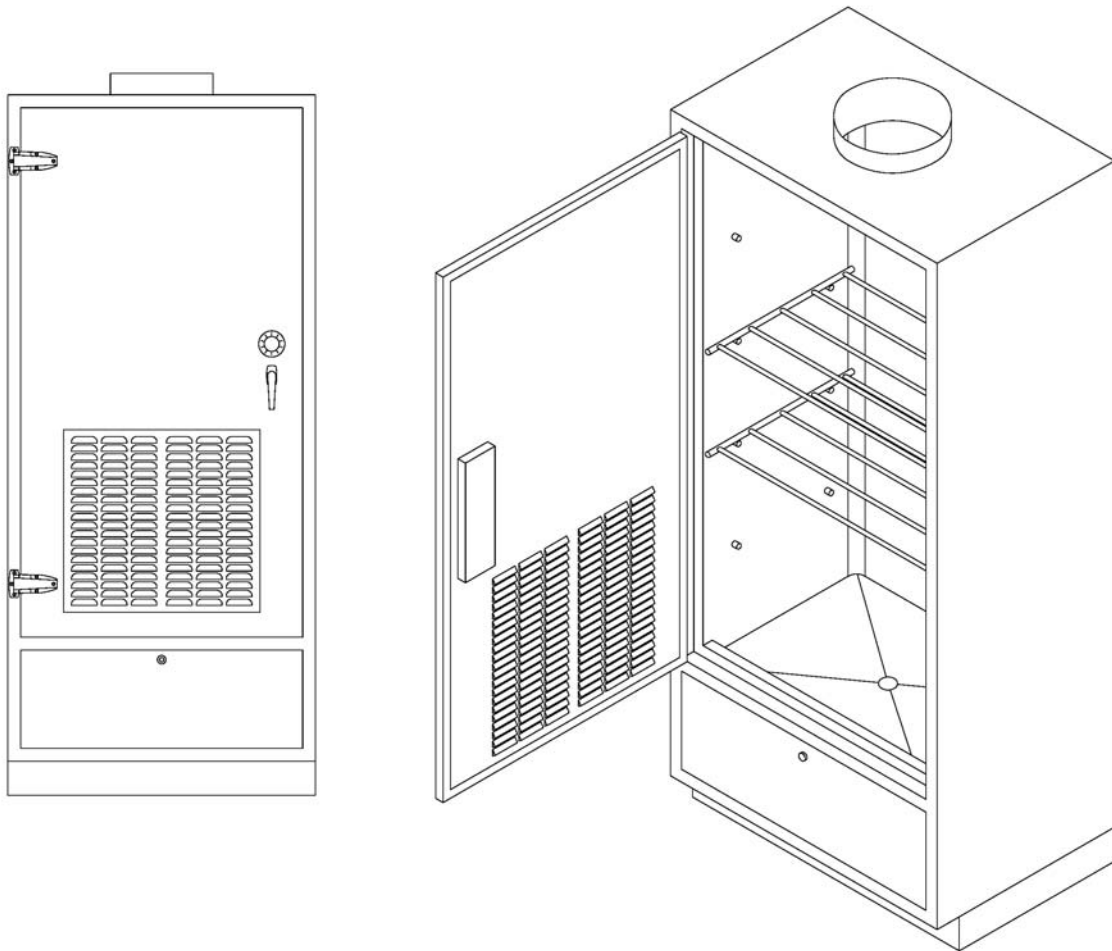
Standard Features

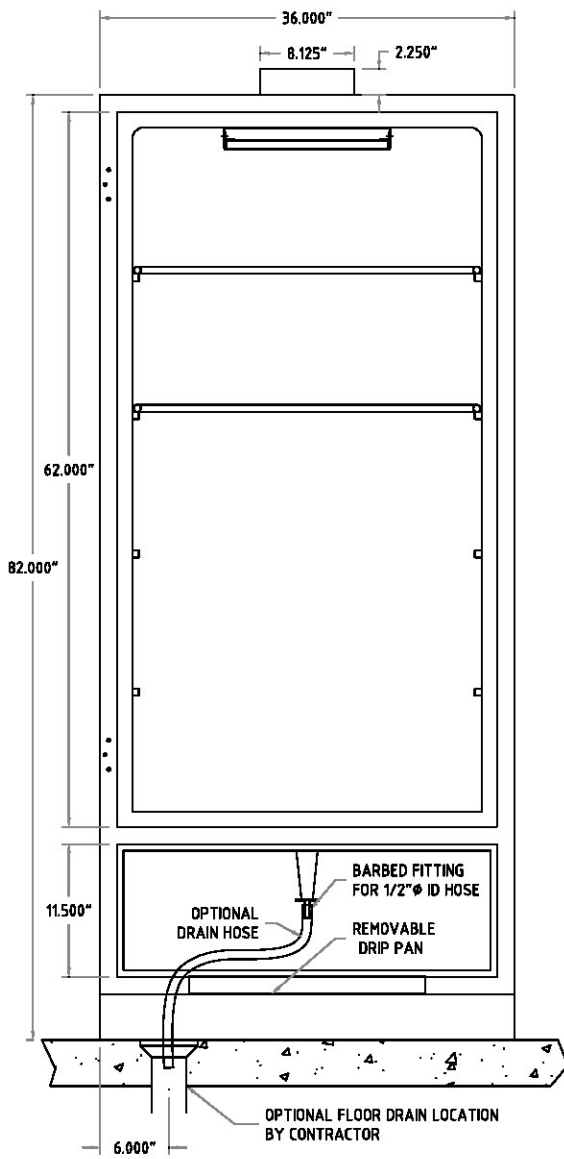
- Modular construction, units shipped fully assembled and ready to use once connected to on-site exhaust ducting and drain.
- Standard configurations each measuring (82"H x 36"W x 24"D)
- Interior dimensions (62"H x 30"W x 21"D)
- Stainless steel interior and exterior throughout
- Insulated double wall construction
- 1 stainless steel removable hanger rod
- 3 stainless steel adjustable shelves
- Louvered door vents with replaceable filter
- Replaceable filter for top exhaust outlet
- Top exhaust outlet accepts 8" dia. duct
- Removable fine mesh screen over floor drain
- Magnetic door gaskets
- Sturdy main door hinges for durability
- Radius interior corners for easy cleaning
- Barbed drainage pipe in base of unit will accept a ½" inner dia. hose
- Removable drain/drip pan in base
- Combination lock on door
- Separate lockable door for access to drain pan, plumbing and levelling feet.
- Easy access to replace air filters
- Adjustable floor levellers in base
- All installation hardware is included
- Lifetime warranty on the frame
- 5 year limited warranty on moving parts

OPTIONS:

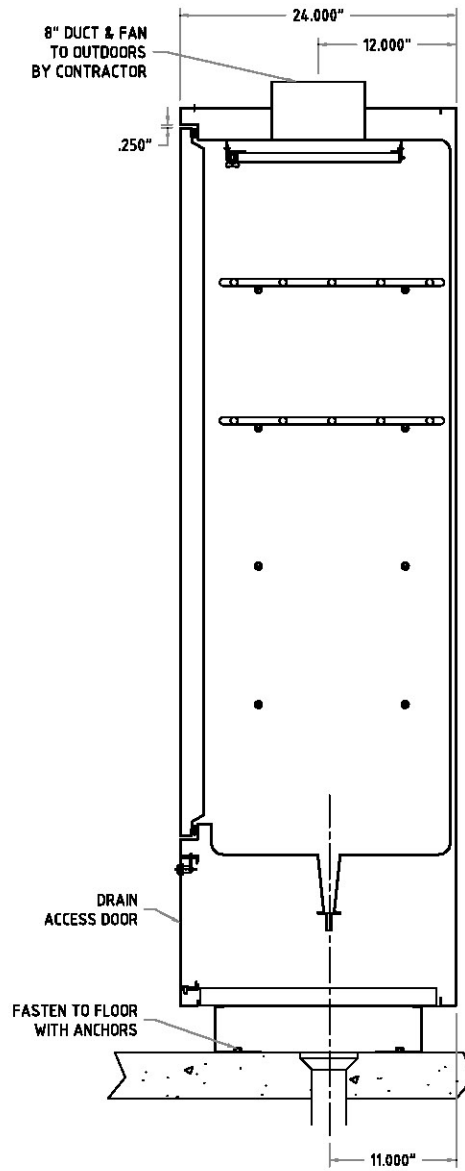
- DC-SVK Stainless steel ball valve kit to control drain

DC-1 Blood Drying Cabinet



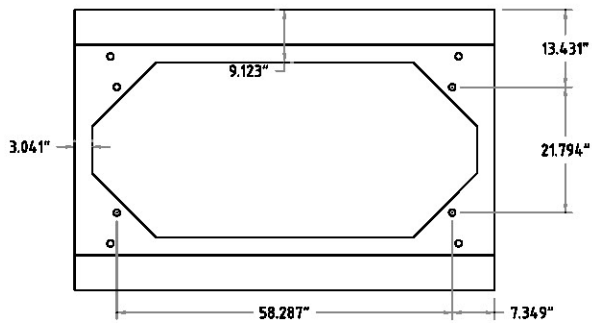


FRONT VIEW (DOORS REMOVED)



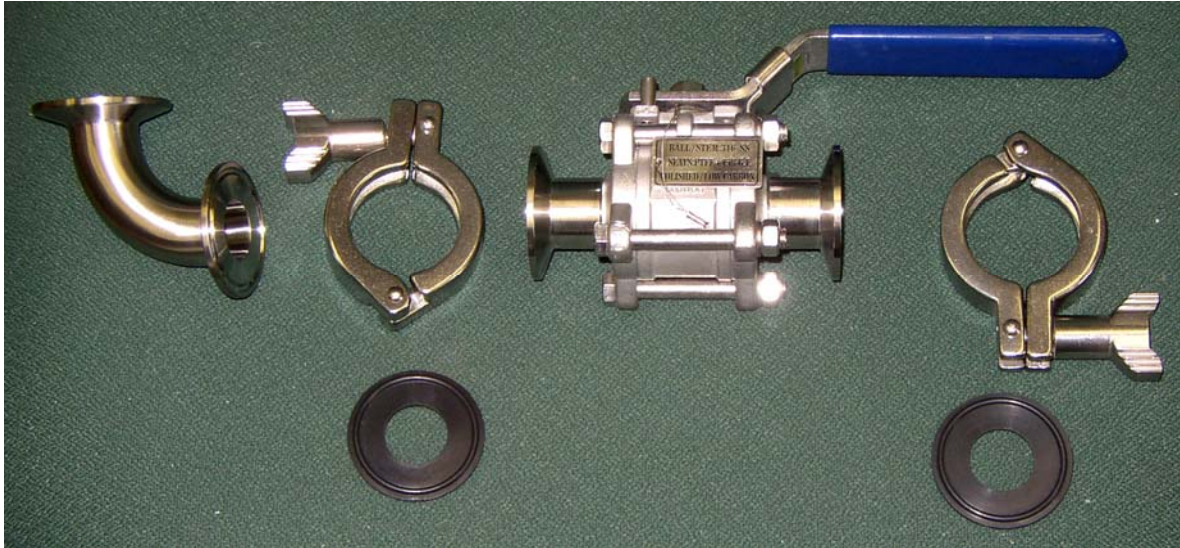
SIDE SECTIONAL VIEW

A STAINLESS STEEL BALL VALVE IS ALSO OPTIONAL AND CAN BE INSTALLED BETWEEN THE CABINET DRAIN AND BARBED FITTING BY DSM.



BASE MOUNTING DETAIL

Blood Drying Cabinet Option



Optional Stainless Steel Ball Valve Kit #DC-SVK



Optional Stainless Steel Ball Valve Kit DC-SVK Installed