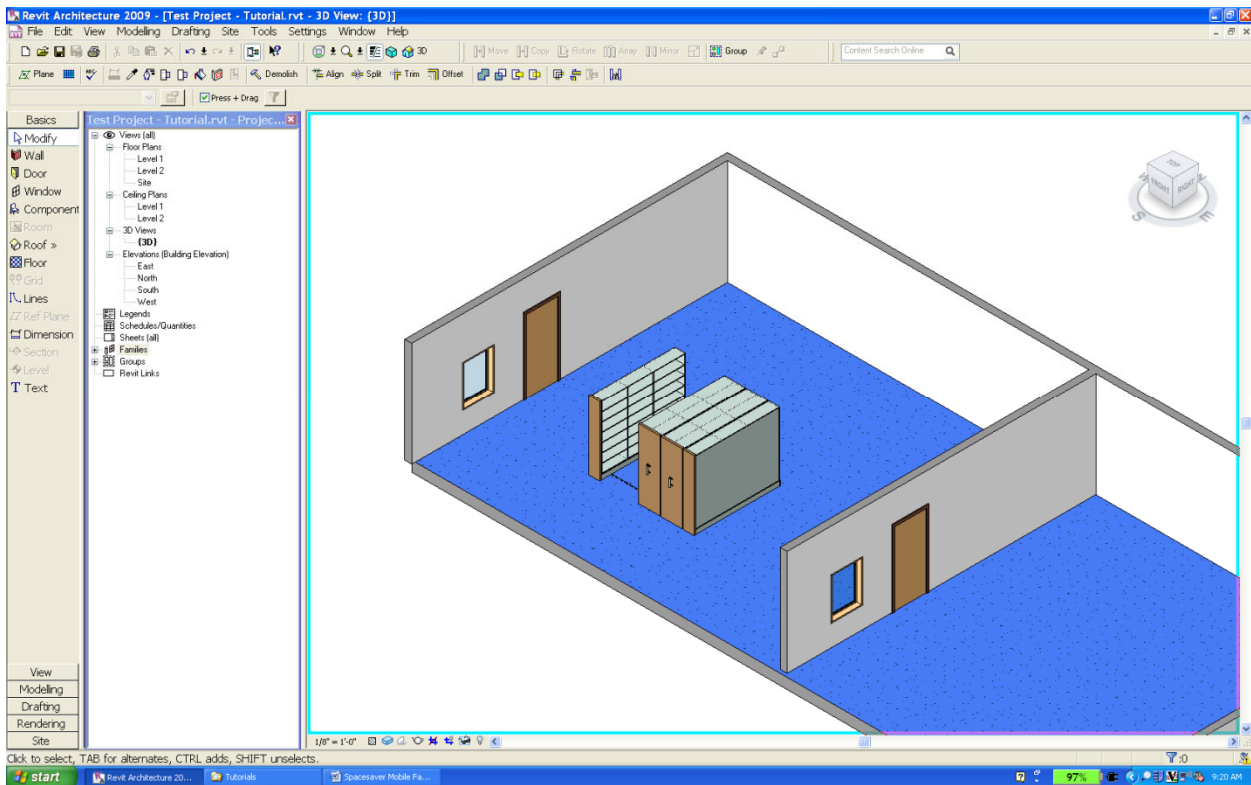


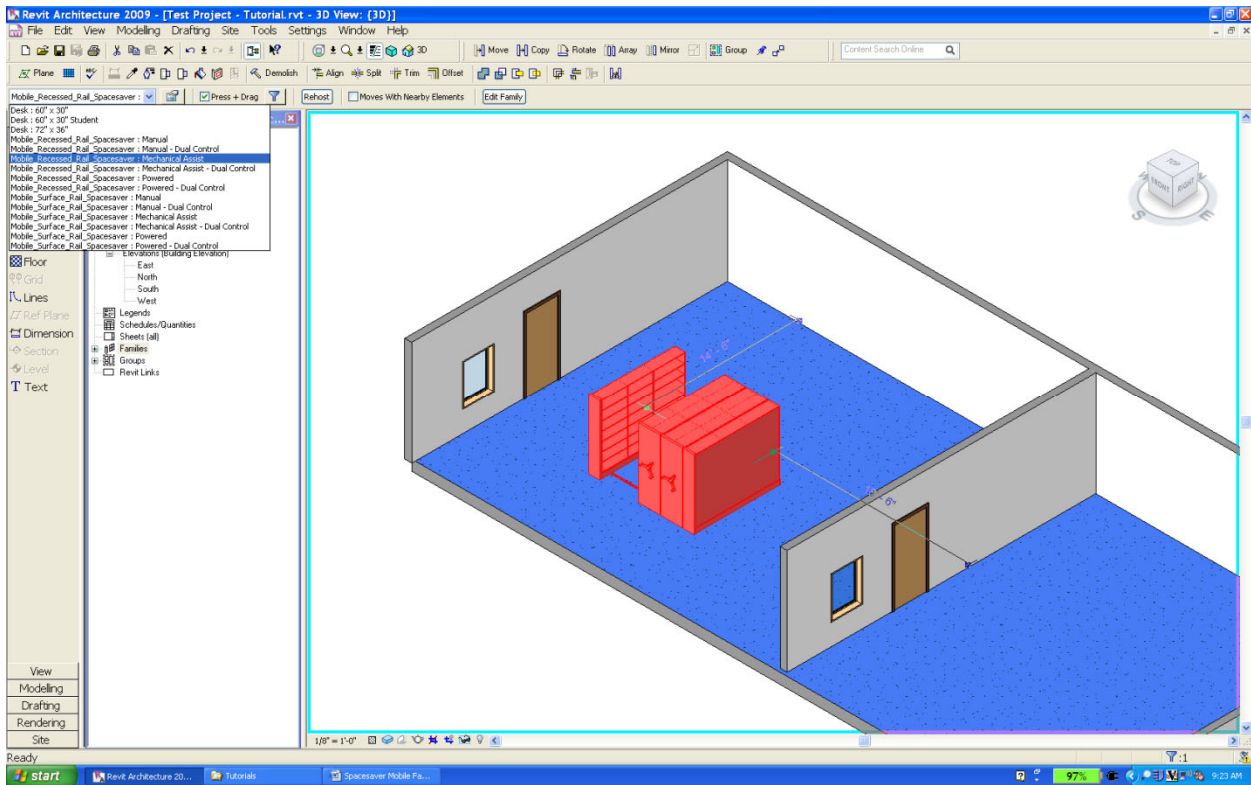
# Spacesaver Mobile Family Usage Tutorial

This tutorial is provided to help the end user understand the behavior of this particular Revit family model and does not intend to limit its application. The application shown is simplified for illustration only.

1. Load the rail specific (**surface** or **recessed**) Spacesaver Mobile (SM) family into your project file. **Note: this is a floor-hosted family so you will require a floor in your project for this family to insert.**

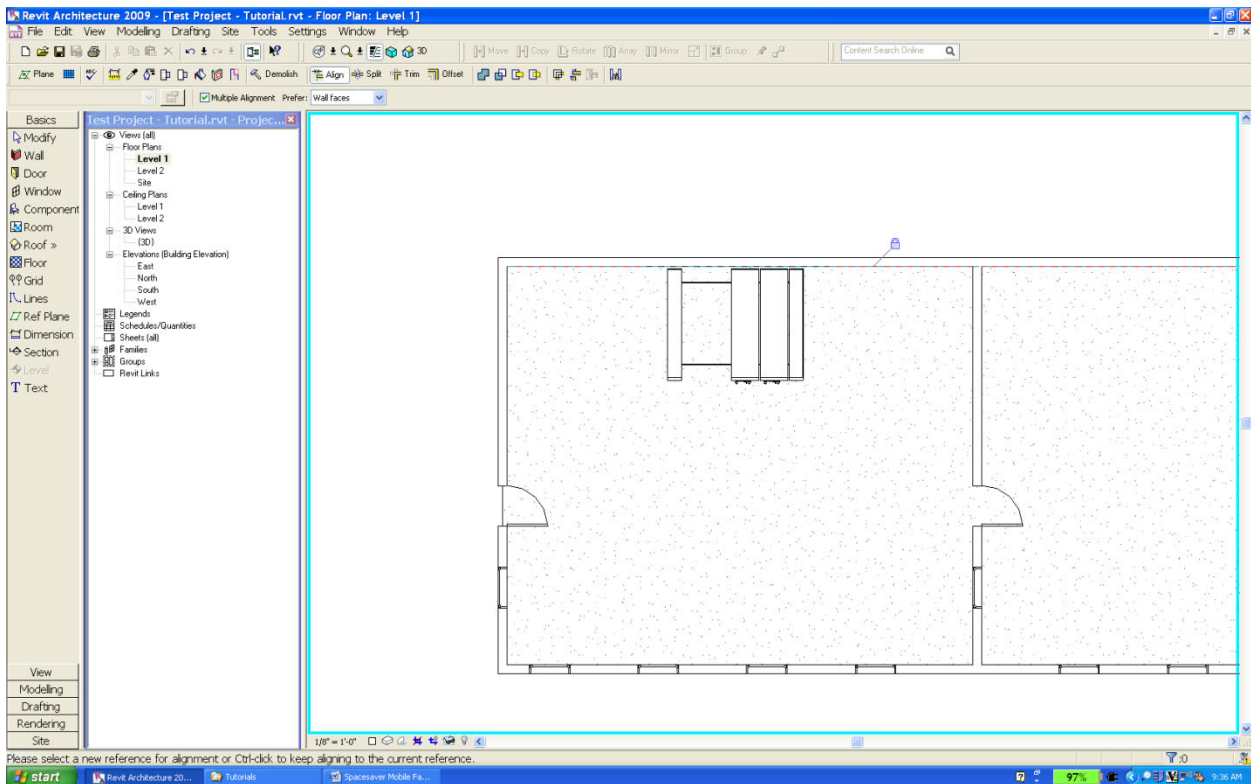


2. Highlight the SM family on your screen and go to the “**Family Type**” selector to choose between a **manual, mechanical assist or powered system** type in either **single control** (end panels at front only) or **dual control** (end panels at both ends). This step must be accomplished prior to system configuration as all parameters will reset if the type is changed afterwards. If the SM system will be installed away from any walls, now is a good time to decide if you will need a dual control SM system.

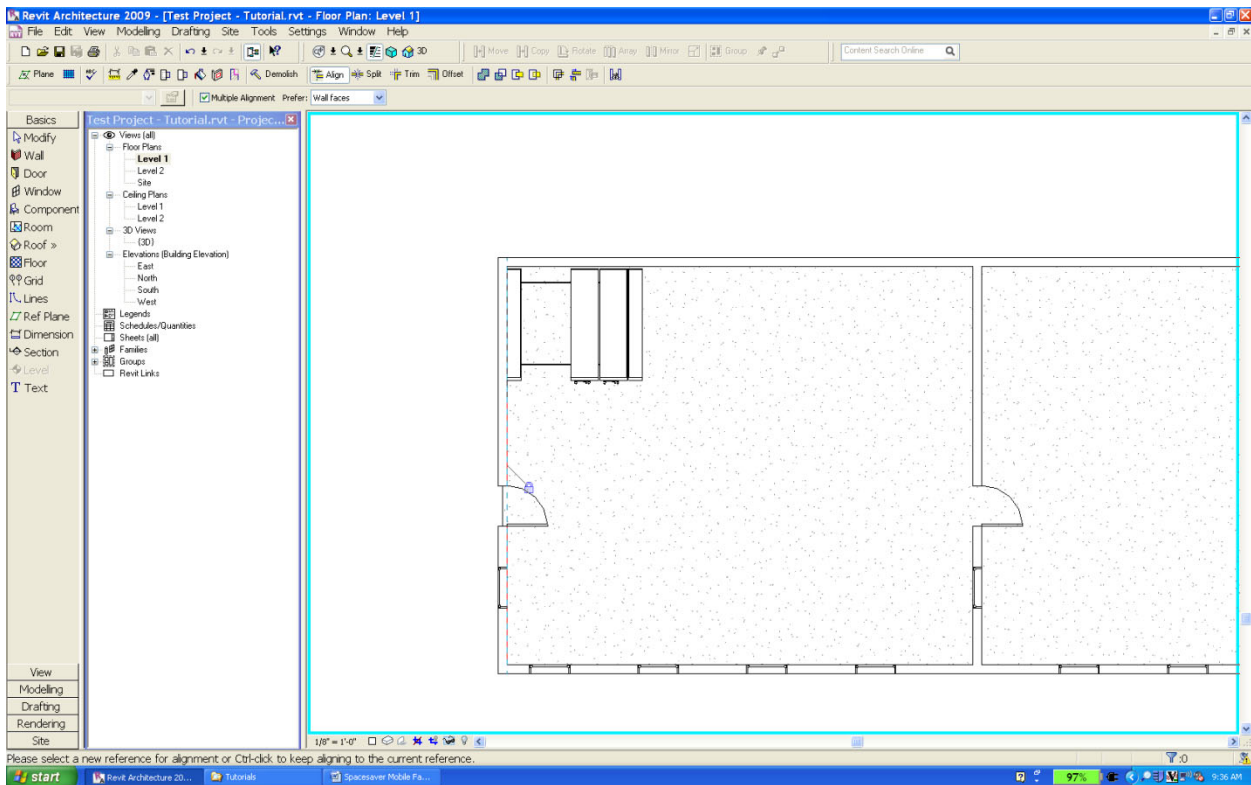


# Spacesaver Mobile Family Usage Tutorial

3. If this particular installation is against a wall (as shown), align and lock the back wall to the 2” reference plane embedded in the family model. This will provide the desired **2” offset from the wall** to avoid most wall obstructions as well as “out-of-square” room conditions. If the SM system will be installed away from a wall, an additional reference plane may be necessary to fully constrain the model’s position.

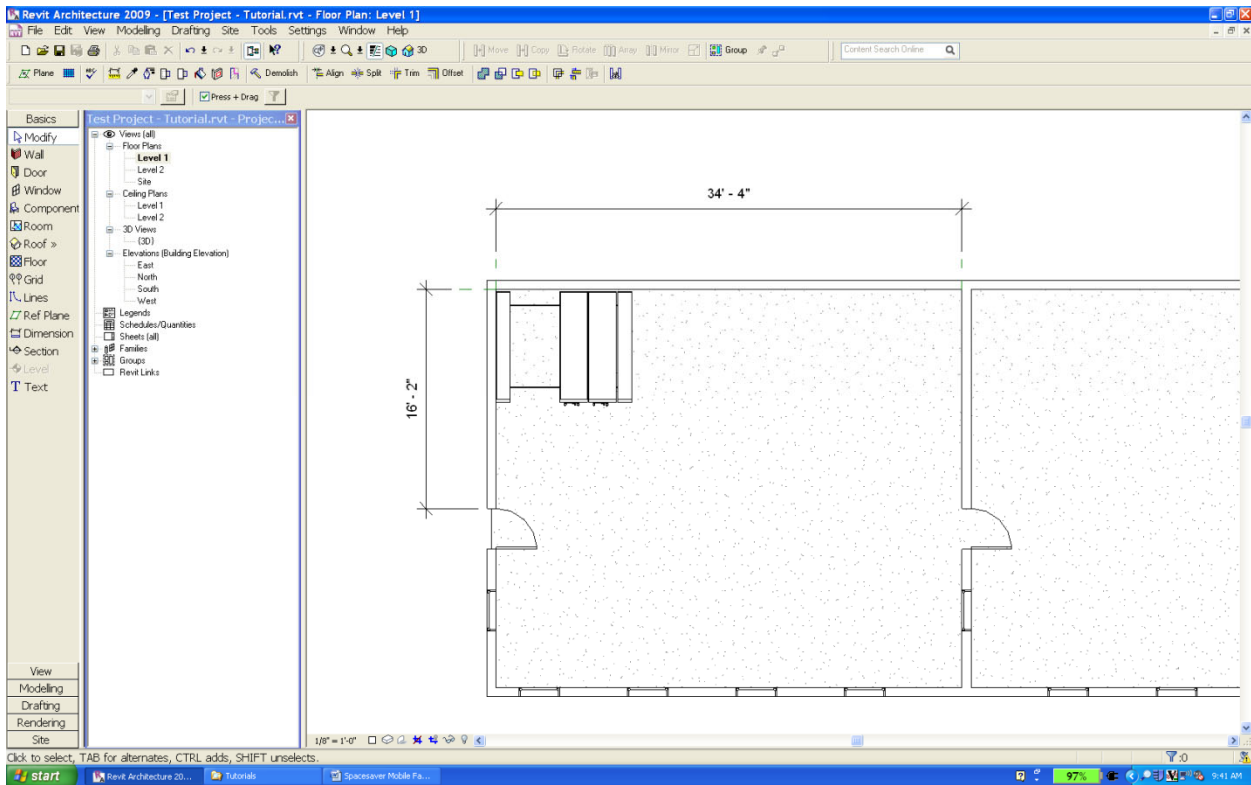


4. Align and lock the left hand side of the left hand stationary platform to the left hand wall.

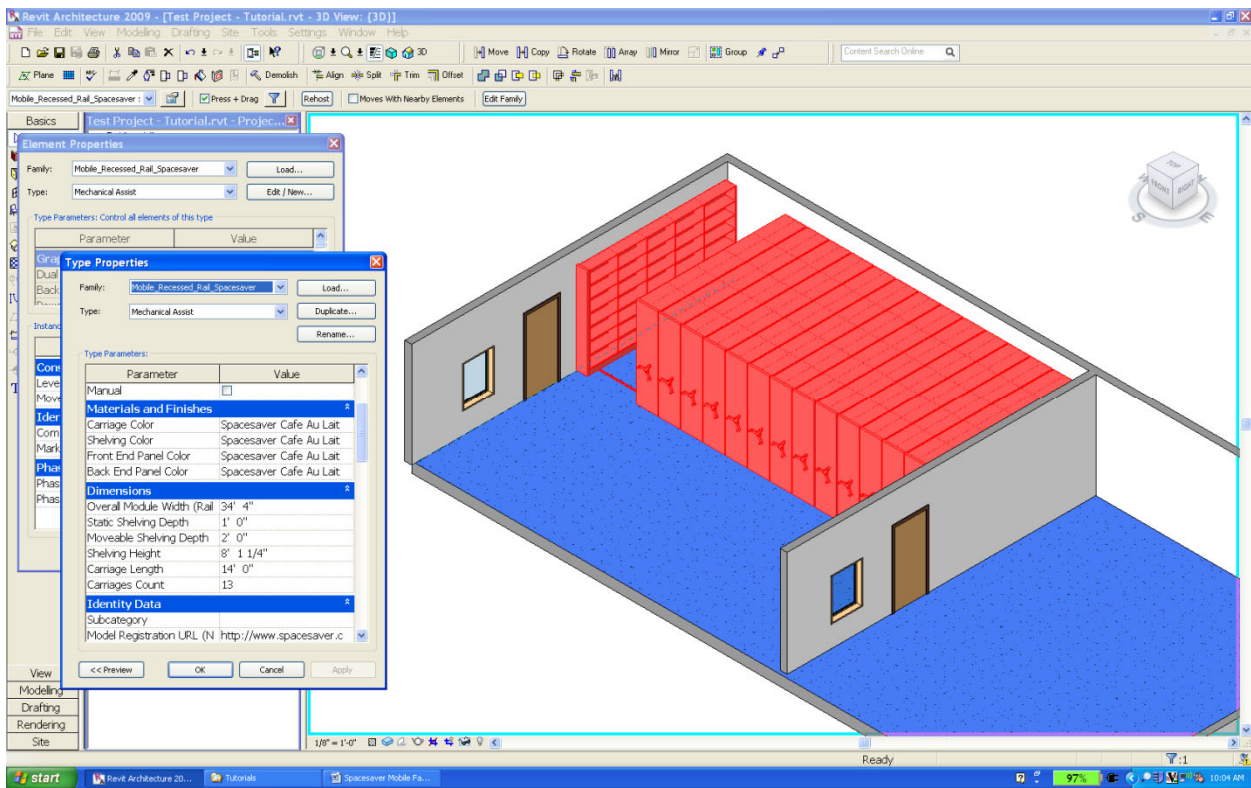


# Spacesaver Mobile Family Usage Tutorial

5. If you don't already know how wide your installation is to be and how long your shelving ranges (carriages/platforms) can be, now would be a good time to add some reference lines and dimensions. Remember to take any wall obstructions into consideration. This step will provide you with valuable information need to adjust the models parameters.



6. Now the model can be “flexed” appropriately through the “**Type Properties**” dialog box found by clicking “**Edit/New...**” within the “**Element Properties**” dialog box. Adjustable parameters are found in the “**Materials and Finishes**” and “**Dimensions**” categories. Click “**OK**” twice and the SM family will adjust to the new parametric values. *TIP: Depending on your computer's speed, flexing may take several minutes. If you make all necessary parameter changes at one time, you may only need to flex it one time.*

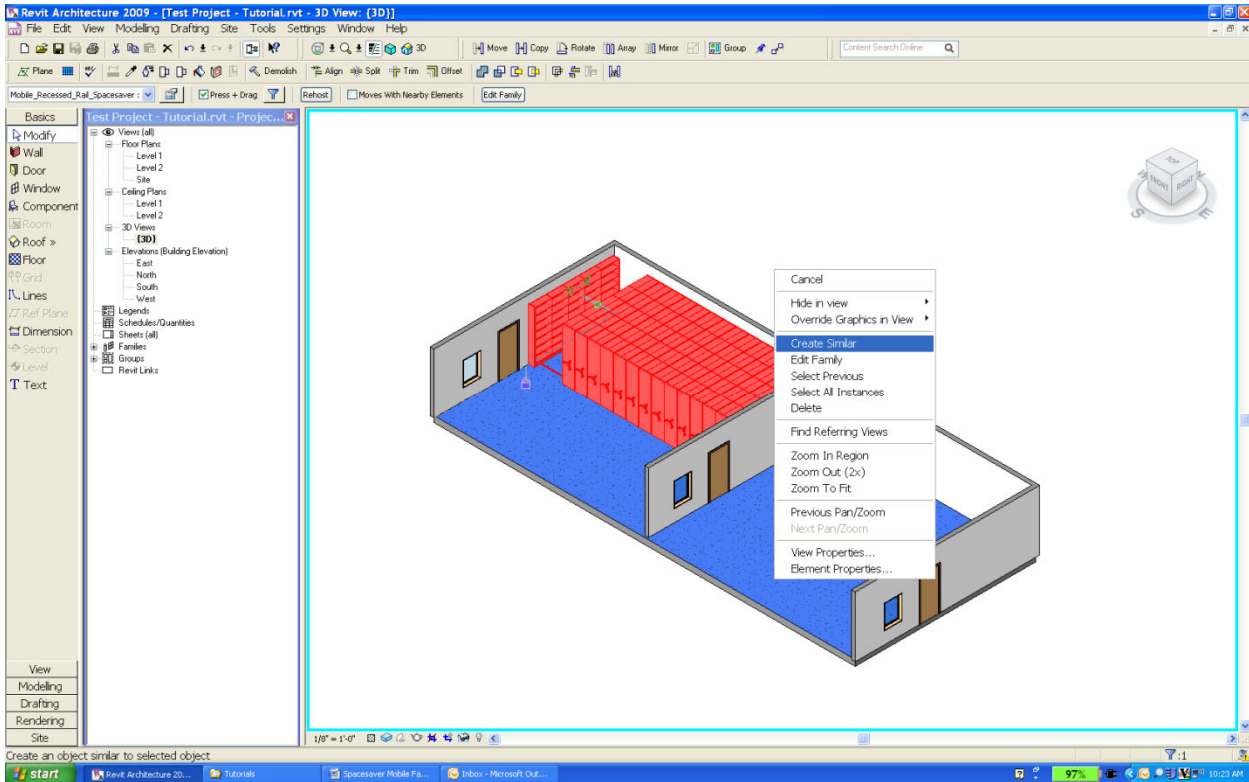




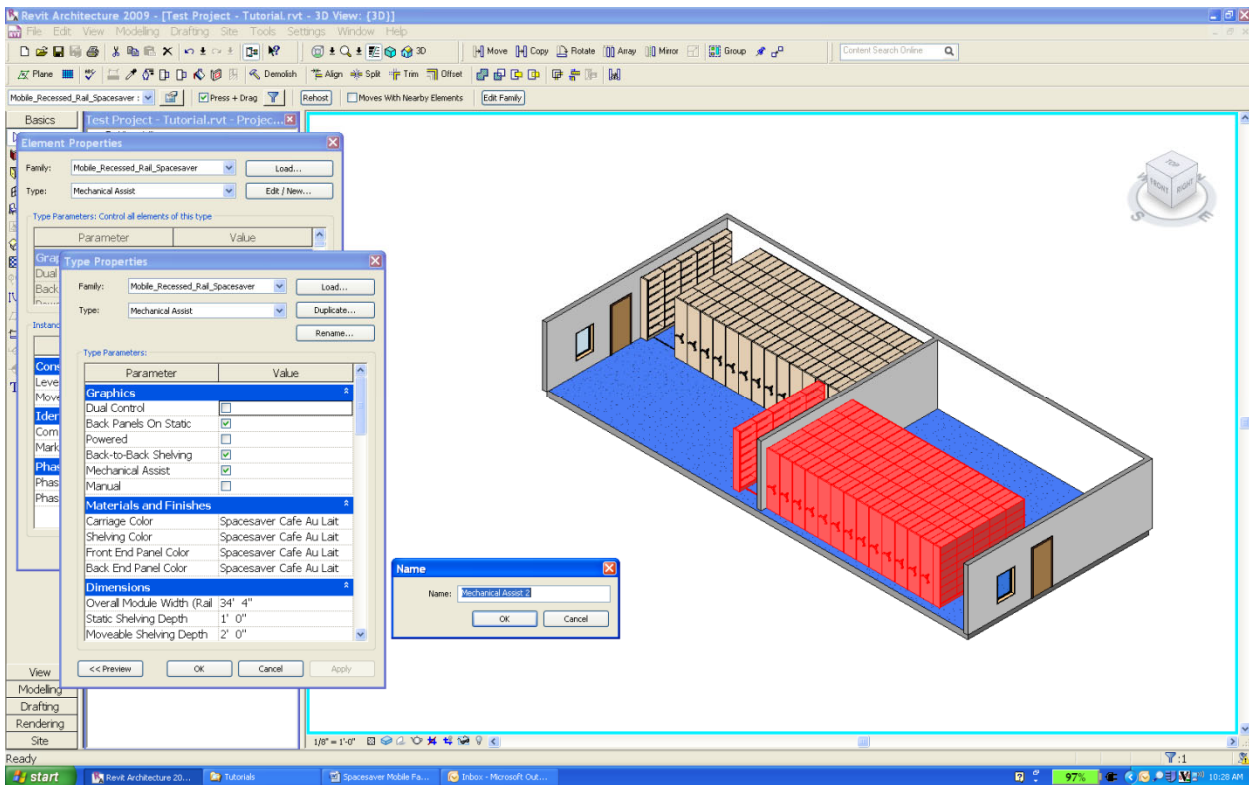
# Spacesaver Mobile Family Usage Tutorial

7. Schedule the family as necessary.

Note: If more than one SM system of the same type is required within your project and you need each SM to flex independently, right click on the model and choose “Create Similar”.

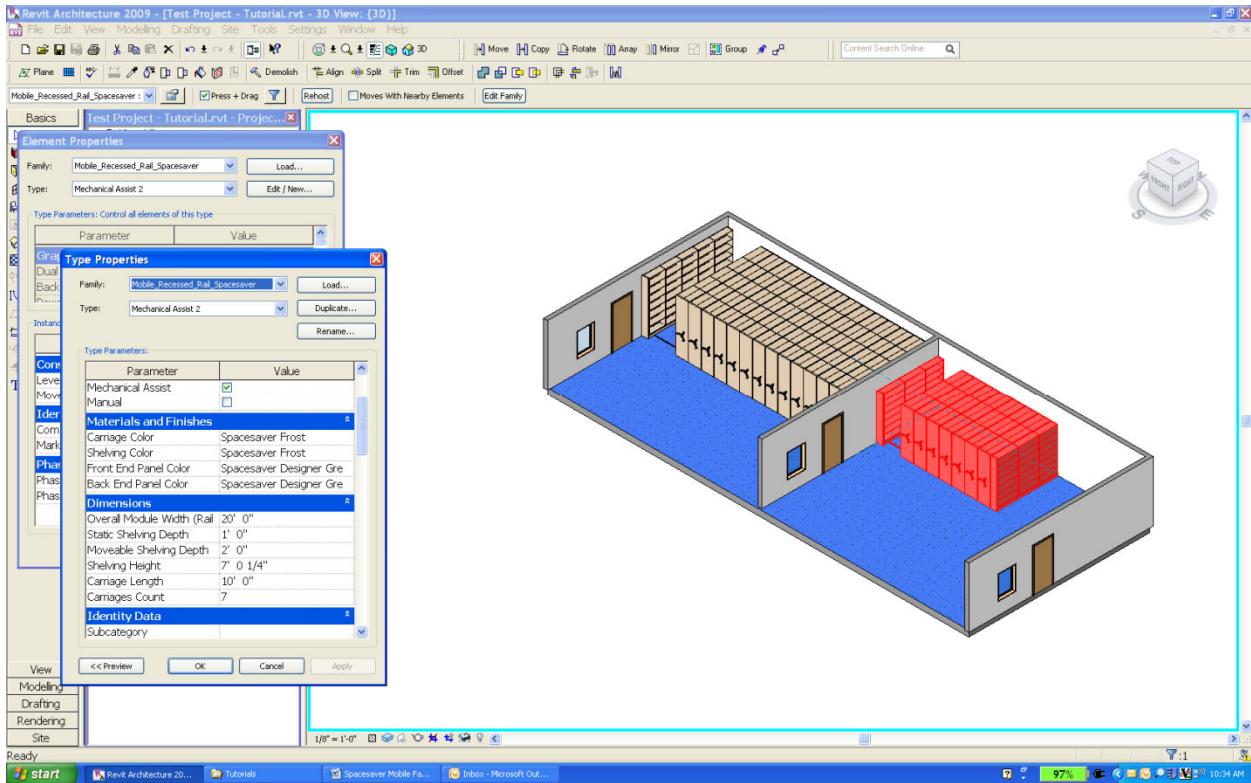


8. Drag the newly created family near the desired location. Highlight this new family and open “Element Properties”. Click “Edit/New...” to open the “Type Properties” dialog box. Create a separate Type by clicking “Duplicate...”. Give the new type a new name or accept the system default. The models will flex independently.

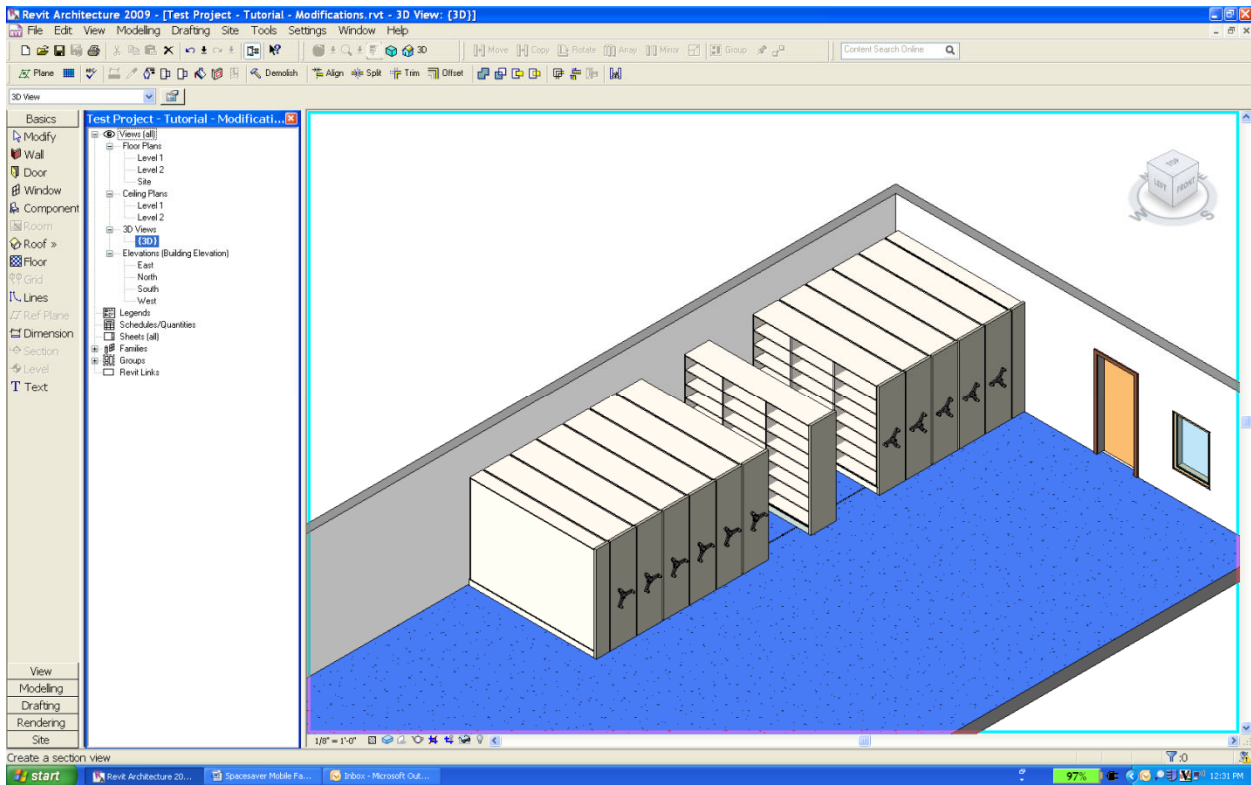


# Spacesaver Mobile Family Usage Tutorial

9. You may now proceed to lock the newly created family to its final location and flex as mentioned above.



Spacesaver recognizes these Revit families will not cover every application. However, depending on the user’s creativity and need, these SM Models may be edited through the **“Edit Family”** tool. Before doing so, make a copy of the SM model file, give it a new name, and make the necessary modifications to preserve any parameters specific to other instances that may already reside in your project. Multiple models may be joined to achieve the desired effect. Bear in mind by utilizing this method, scheduling will not function properly.



If the open aisle is desired on the opposite side of the system, the **“Mirror”** function will provide this flexibility. Please contact Spacesaver Corporation using the URLs imbedded within these model (highlight the model, right click and choose **“Element Properties”**, click **“Edit/New...”** and look for them in the **“Identity Data”** category within **“Type Properties”**). We will gladly put you in touch with a factory trained professional to help you with your storage need specifications, mobile system options, color options, shelving size information, and timely quotes.