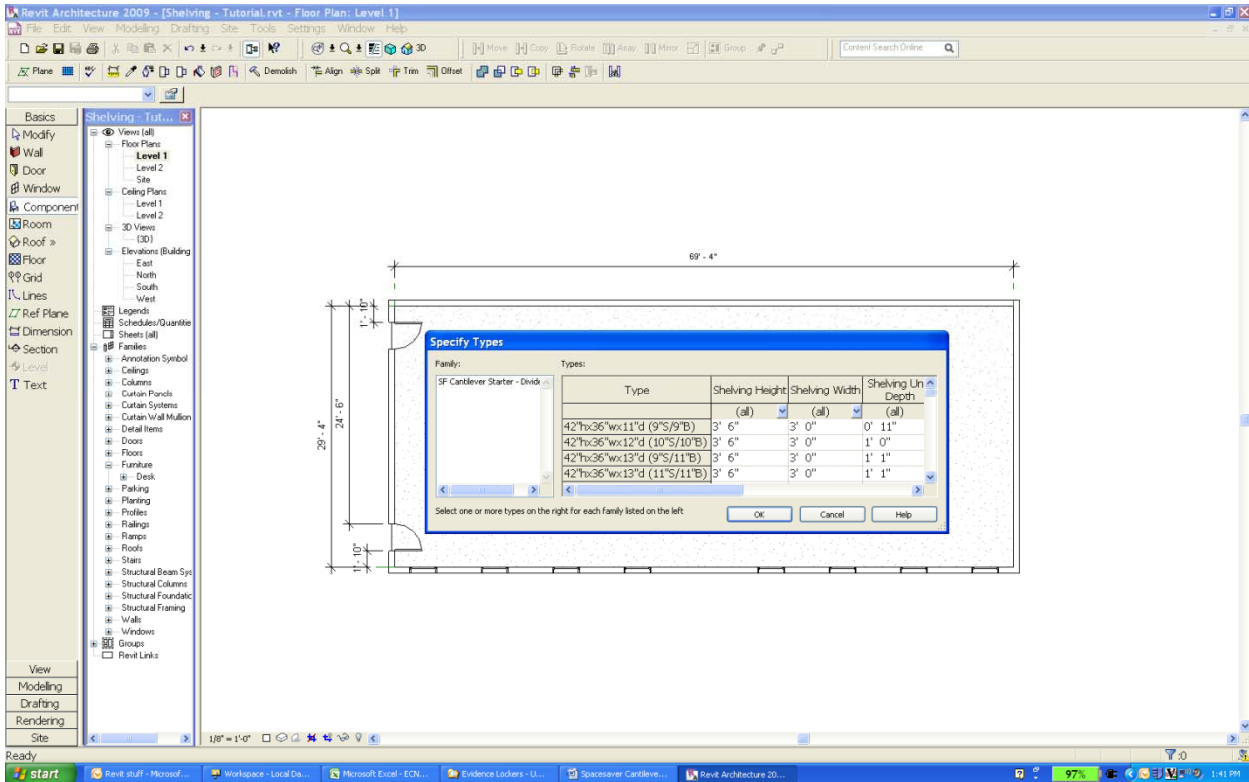


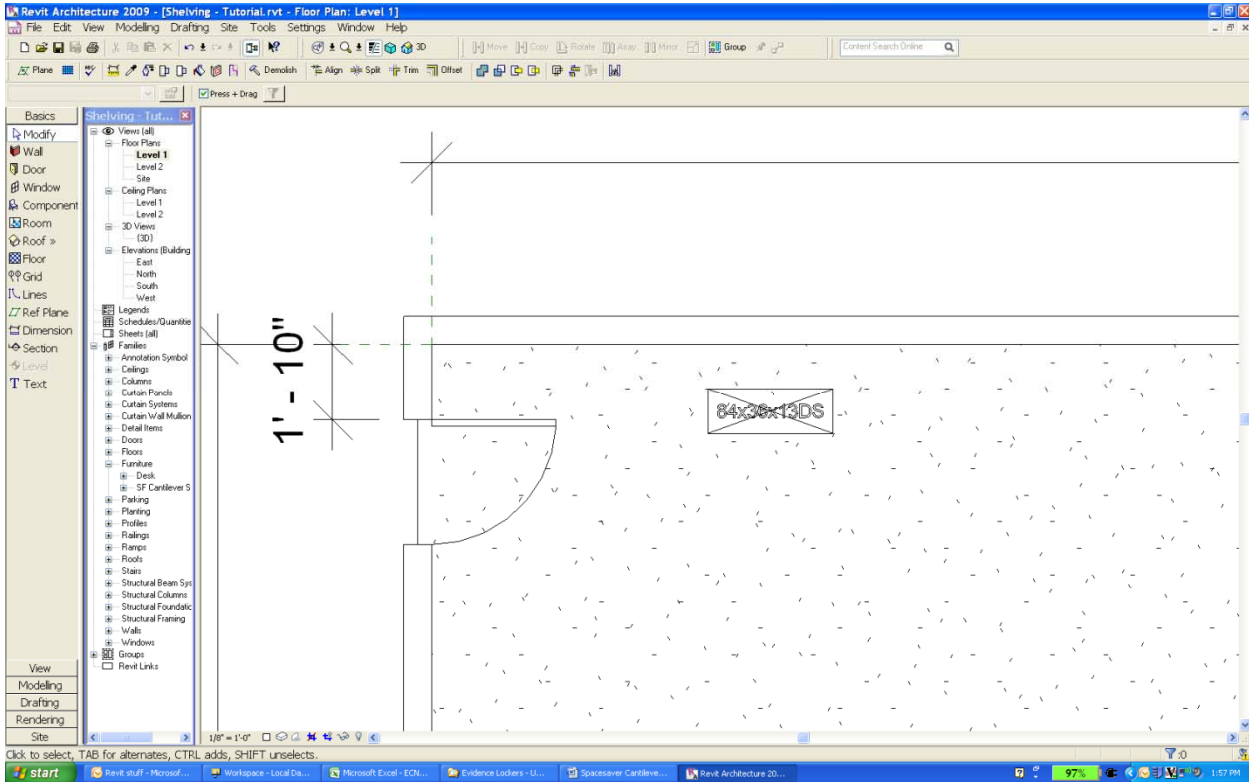
Spacesaver Cantilever Shelving Family Usage Tutorial

This tutorial is provided to help the end user understand the behavior of this particular Revit family model and does not intend to limit its application. The application shown is simplified for illustration only.

1. Load the desired **Spacesaver Cantilever Shelving (SCS)** family into your project file. **Type catalogs have been provided with all SCS families allowing the end user to only load specific family types.** Shelving types have been labeled to show Height, Width, and overall Depth, followed by an S value (actual depth of all adjustable shelves) and a B value (actual depth of the base shelves). **The S and B values do not include the 2” depth of the welded frame.** SCS families are divided into Single Face Starters and Adders as well as Double Face Starters and Adders, in both Plain and Divided (Slotted) shelf versions. **These families are all 36” wide.** 24” and 30” shelving is available and may be created from these by using the “Edit Family” editor.

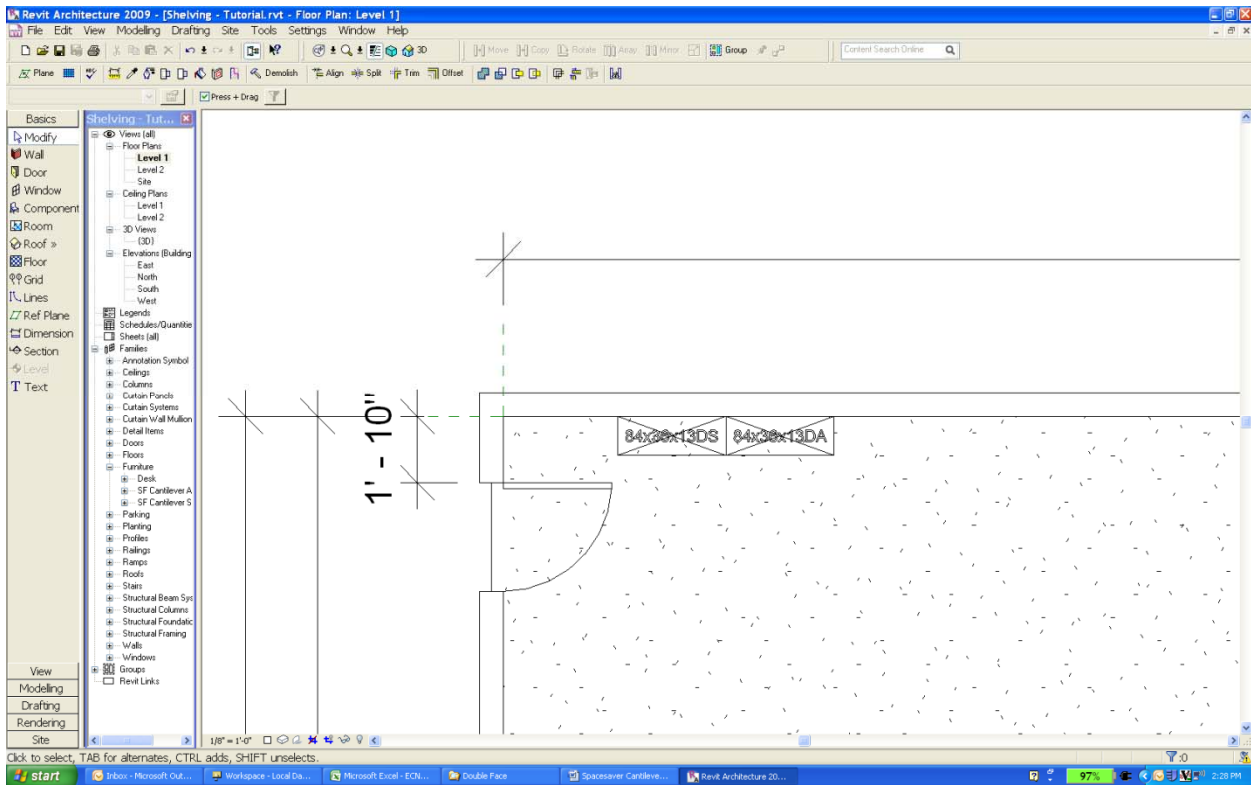


2. All SCS family models contain a label to assist in type identification. Labels denote unit Height x Width x overall Depth followed by D for divider (slotted) shelving or P for plain type and S for Starters or A for Adders.

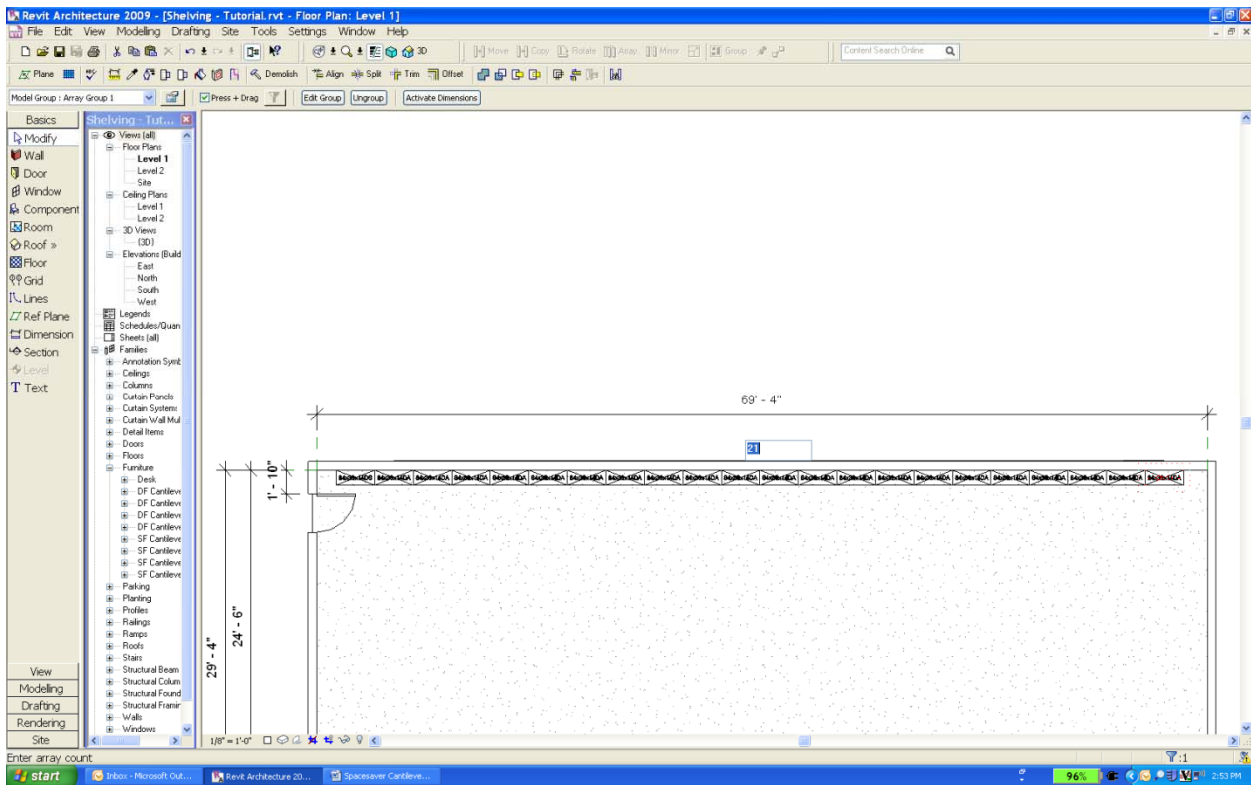


Spacesaver Cantilever Shelving Family Usage Tutorial

3. Position the models. In most cases, shelving runs begin with a Starter and finish with Adders (unless your project specification calls for all Starters). **Note: There are many reference planes down the center (left to right) and at either side of these families. Be aware of this when aligning Adder to Starter to ensure there is no overlap or misalignment.**

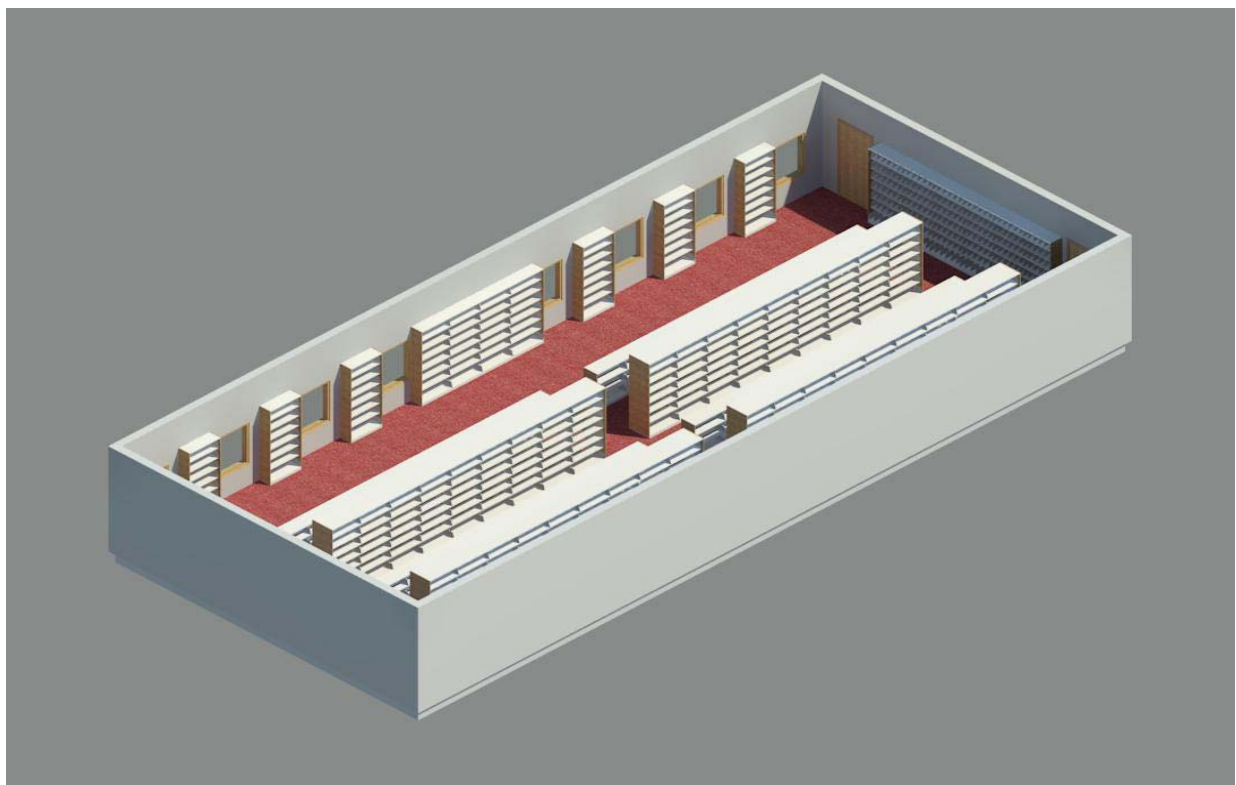
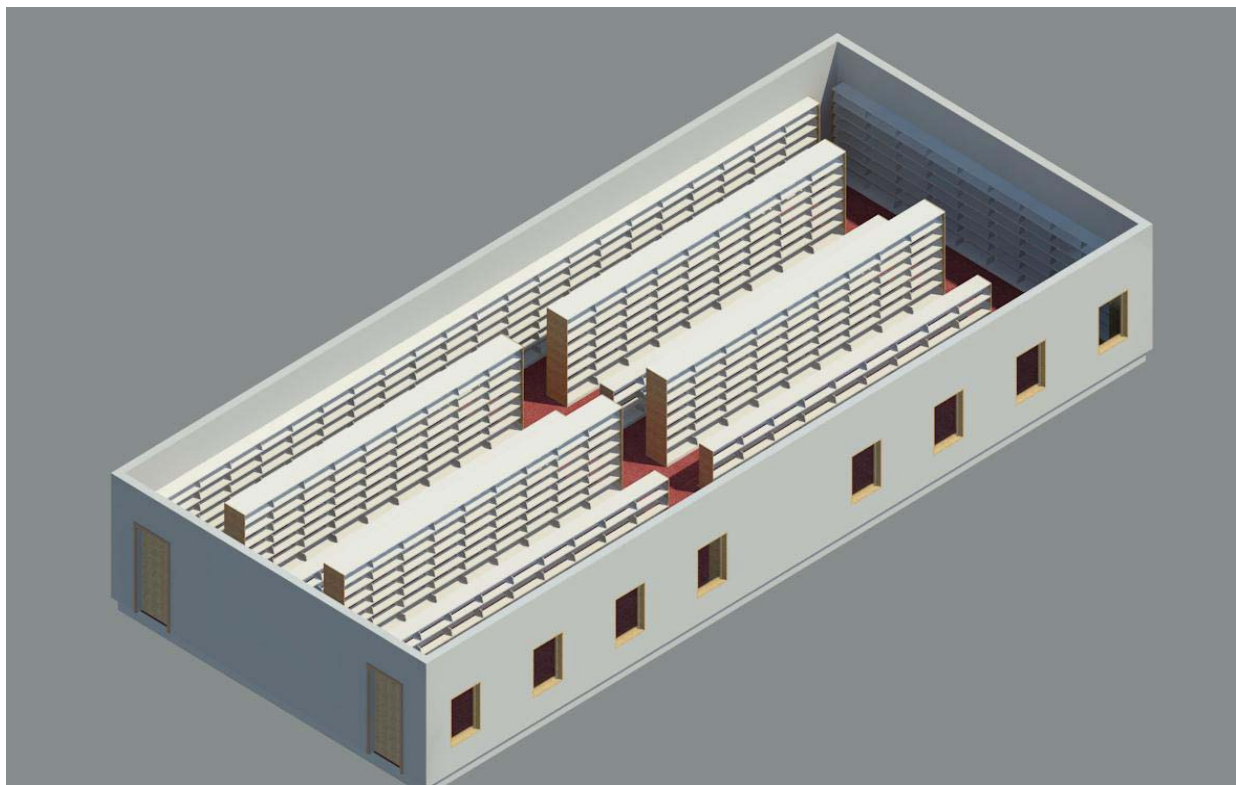


4. These SCS families have optional canopy tops, back panels (Single Face only), and end panels. **End panels on Starters are both Left & Right, the end panel on Adders is only to the Right.** If you intend to use the canopies and back panels, please turn these on prior to proceeding with any arrays. When creating arrays, be aware of the previously mentioned multiple reference planes at both sides. Any overlapping here will directly impact your overall range length. Once the shelving range length is established, the last unit in the array may be ungrouped and the end panel turned on.



Spacesaver Cantilever Shelving Family Usage Tutorial

5. Continue with positioning and arraying until your storage capacity is fulfilled. Remember, to save time, arrays may also be arrayed, grouped and saved as favorites.



Please contact Spacesaver Corporation using the URLs imbedded within these model (highlight the model, right click and choose “**Element Properties**”, click “**Edit/New...**” and look for them in the “**Identity Data**” category within “**Type Properties**”). We will gladly put you in touch with a factory trained professional to help you with your storage need specifications, mobile system options, color options, shelving size information, and timely quotes.