

# STANDARD COLORS

POWDER COAT PAINT FINISHES

MOBILE, SHELVING & STORAGE

(Except for DSM Products & UWR Storage Systems. Rotary is only available in textured paint.)



CO – Cottonwood (204)



LG – Light Tone (29)



FW – Furniture White\* (15)



WP – Whisper (216)



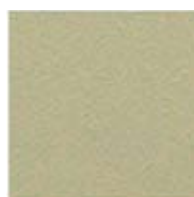
WB – Warm Brown (18)



TN – Tan\* (1)



DG – Designer Grey (2)



ALL PRODUCTS



FR – Frost\* (6)



BG – Blue Grey (25)



BL – Black (7)



DSM™ PRODUCTS & UWR™ STORAGE SYSTEMS ONLY



NB – Nevada Beige (250)



GL – Locker Grey (239)



FG – Forest Green (84)

There is an upcharge for colors selected outside of the *Standard Colors* appearing on this card.

\*QuickShip color offerings:  
(Shelving/Mobile QuickShip *smooth only*.  
Rotary QuickShip Tan and Frost *textured only*.)

The swatch materials in this brochure are provided as a color guideline. There may be a variation in color, textured, finish and gloss between these samples and the actual product.



### A COMMITMENT TO OUR CUSTOMERS

As our ISO 9001:2008 certification would suggest, Spacesaver is dedicated to the highest standards of product quality. Equally important is our commitment to customer service, both before the sale and after.

Through our extensive network of local Area Contractors, Spacesaver provides a level of experience and competency that others simply do not. From architectural constraints and building codes to system design and floor-loading, we have the expertise to handle every issue and customer concern.

A storage solution that meets your unique criteria. Single-source turn-key project management. Certified system installation. Ongoing maintenance and support. Spacesaver sets a standard of professionalism, performance and responsiveness that is unmatched. We live up to our customer commitments and have the references to prove it.

You can rely on The Spacesaver Group.

### A COMMITMENT TO QUALITY POWDER COAT PAINT FINISHES

All components go through a multistage surface preparation prior to being coated; this process enhances topcoat bonding. The topcoat is a furniture-quality, epoxy-polyester hybrid Powder Coat Finish that meets or exceeds specifications set forth by the American Library Association.

Our electrostatically-applied, thermoset Powder Coat Paint System provides a durable hard finish with superior performance qualities.

- Excellent abrasion, impact, corrosion, stain, yellowing and chemical resistance.
- Exceptional adhesion with uniform film thickness and elimination of runs and sags associated with wet systems.
- A higher edge coating film thickness which virtually eliminates any sharp metal edges.
- Optional antimicrobial powder coat finish is available on all normally powder coated products. Antimicrobial powder coat contains a time-released germicide that is 99.9994% effective in controlling the growth of bacteria, mold, and mildew on the surface.

### A COMMITMENT TO THE ENVIRONMENT

Our system is environmentally safe without any volatile or fugitive (stray) emissions in the finished product. Additionally, during the manufacturing process, we produce no volatile emissions or hazardous waste.



Spacesaver Corporation  
1450 Janesville Avenue  
Fort Atkinson, WI 53538-2798  
1-800-492-3434  
www.spacesaver.com



KI  
1330 Bellevue Street  
P.O. Box 8100  
Green Bay, WI 54302-8100  
1-800-424-2432  
www.ki.com

Spacesaver Corporation is a division of KI.

KI is a registered trademark of Krueger International, Inc.

Spacesaver is a registered trademark of Spacesaver Corporation.

© 2009 KI and Spacesaver Corporation. All Rights Reserved. Litho in USA. SC-0809 SSC/MRK 11/09

# CUSTOM COLORS

POWDER COAT PAINT FINISHES



NG – Neutral Ground (224)



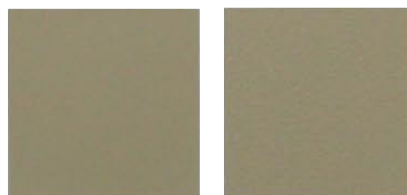
WS – Wet Sand (223)



CW – Creamy White (205)



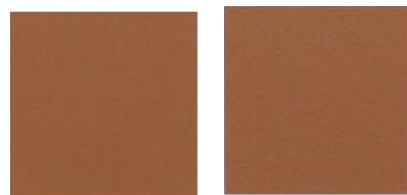
CE – Chamomile (203)



MZ – Moss (211)



CF – Café Au Lait (201)



RI – Red Iron (252)



DO – Dolphin (206)



TD – Thunder (33)



ND – Nordic (212)



GC – Grey Cloud (225)



MT – Medium Tone (27)



FN – Flannel (207)

There is a 5% upcharge for custom colors.  
Rotary is only available in textured paint.

The swatch materials in this brochure are provided as a color guideline. There may be a variation in color, texture, finish and gloss between these samples and the actual product.

### A COMMITMENT TO OUR CUSTOMERS

As our ISO 9001:2008 certification would suggest, Spacesaver is dedicated to the highest standards of product quality. Equally important is our commitment to customer service, both before the sale and after.

Through our extensive network of local Area Contractors, Spacesaver provides a level of experience and competency that others simply do not. From architectural constraints and building codes to system design and floor-loading, we have the expertise to handle every issue and customer concern.

A storage solution that meets your unique criteria. Single-source turn-key project management. Certified system installation. Ongoing maintenance and support. Spacesaver sets a standard of professionalism, performance and responsiveness that is unmatched. We live up to our customer commitments and have the references to prove it.

You can rely on The Spacesaver Group.

### A COMMITMENT TO QUALITY POWDER COAT PAINT FINISHES

All components go through a multistage surface preparation prior to being coated; this process enhances topcoat bonding. The topcoat is a furniture-quality, epoxy-polyester hybrid Powder Coat Finish that meets or exceeds specifications set forth by the American Library Association.

Our electrostatically-applied, thermoset Powder Coat Paint System provides a durable hard finish with superior performance qualities.

- Excellent abrasion, impact, corrosion, stain, yellowing and chemical resistance.
- Exceptional adhesion with uniform film thickness and elimination of runs and sags associated with wet systems.
- A higher edge coating film thickness which virtually eliminates any sharp metal edges.
- Optional antimicrobial powder coat finish is available on all normally powder coated products. Antimicrobial powder coat contains a time-released germicide that is 99.9994% effective in controlling the growth of bacteria, mold, and mildew on the surface.

### A COMMITMENT TO THE ENVIRONMENT

Our system is environmentally safe without any volatile or fugitive (stray) emissions in the finished product. Additionally, during the manufacturing process, we produce no volatile emissions or hazardous waste.



Spacesaver Corporation  
1450 Janesville Avenue  
Fort Atkinson, WI 53538-2798  
1-800-492-3434  
www.spacesaver.com



KI  
1330 Bellevue Street  
P.O. Box 8100  
Green Bay, WI 54302-8100  
1-800-424-2432  
www.ki.com

Spacesaver Corporation is a division of KI.

KI is a registered trademark of Krueger International, Inc.

Spacesaver is a registered trademark of Spacesaver Corporation.

© 2009 KI and Spacesaver Corporation. All Rights Reserved. Litho in USA. SC-0810 SSC/MAR 11/09

# METALLIC COLORS

POWDER COAT PAINT FINISHES



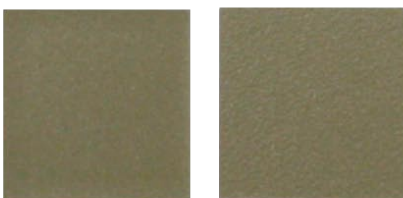
SX – Starlight Silver (145)



MO – Moonbeam (220)



OM – Old Gold (221)



CM – Champagne (218)



ZM – Bronze (217)



EX – Espresso (151)

There is a 10% upcharge for metallic colors.  
Rotary is only available in textured paint.

The swatch materials in this brochure are provided as a color guideline. There may be a variation in color, texture, finish and gloss between these samples and the actual product.



### A COMMITMENT TO OUR CUSTOMERS

As our ISO 9001:2008 certification would suggest, Spacesaver is dedicated to the highest standards of product quality. Equally important is our commitment to customer service, both before the sale and after.

Through our extensive network of local Area Contractors, Spacesaver provides a level of experience and competency that others simply do not. From architectural constraints and building codes to system design and floor-loading, we have the expertise to handle every issue and customer concern.

A storage solution that meets your unique criteria. Single-source turn-key project management. Certified system installation. Ongoing maintenance and support. Spacesaver sets a standard of professionalism, performance and responsiveness that is unmatched. We live up to our customer commitments and have the references to prove it.

You can rely on The Spacesaver Group.

### A COMMITMENT TO QUALITY POWDER COAT PAINT FINISHES

All components go through a multistage surface preparation prior to being coated; this process enhances topcoat bonding. The topcoat is a furniture-quality, epoxy-polyester hybrid Powder Coat Finish that meets or exceeds specifications set forth by the American Library Association.

Our electrostatically-applied, thermoset Powder Coat Paint System provides a durable hard finish with superior performance qualities.

- Excellent abrasion, impact, corrosion, stain, yellowing and chemical resistance.
- Exceptional adhesion with uniform film thickness and elimination of runs and sags associated with wet systems.
- A higher edge coating film thickness which virtually eliminates any sharp metal edges.
- Optional antimicrobial powder coat finish is available on all normally powder coated products. Antimicrobial powder coat contains a time-released germicide that is 99.9994% effective in controlling the growth of bacteria, mold, and mildew on the surface.

### A COMMITMENT TO THE ENVIRONMENT

Our system is environmentally safe without any volatile or fugitive (stray) emissions in the finished product. Additionally, during the manufacturing process, we produce no volatile emissions or hazardous waste.



Spacesaver Corporation  
1450 Janesville Avenue  
Fort Atkinson, WI 53538-2798  
1-800-492-3434  
www.spacesaver.com



KI  
1330 Bellevue Street  
P.O. Box 8100  
Green Bay, WI 54302-8100  
1-800-424-2432  
www.ki.com

Spacesaver Corporation is a division of KI.

KI is a registered trademark of Krueger International, Inc.

Spacesaver is a registered trademark of Spacesaver Corporation.

© 2009 KI and Spacesaver Corporation. All Rights Reserved. Litho in USA. SC-0811 SSC/MRK 11/09

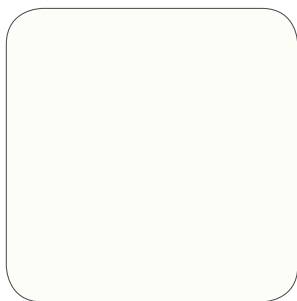
# THERMOFUSED MELAMINE

## LOW PRESSURE LAMINATE FINISHES

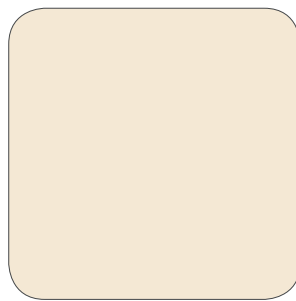
Spacesaver is pleased to offer eight color/pattern selections of quality low pressure laminate product for use as face panels, back panels and tops on mobile and stationary shelving units. Thermofused melamine low pressure face and back panels provide a multipurpose, economical and decorative finish.

These decorative panels consist of a melamine resin-impregnated decorative paper, thermally fused to an industrial grade 3/4" (19 mm) particleboard. Lamination is permanent. Durability is built in. The panels are also highly resistant to stains, scratches, abrasion, chip-out, burnishing, steam, and radiant heat.

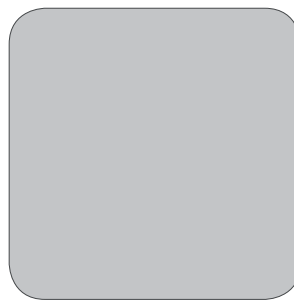
### STANDARD



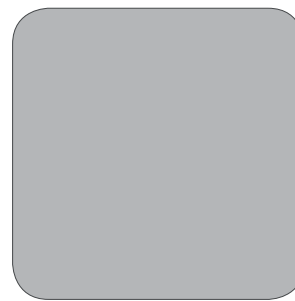
Oxford White



Almondine



Custom Grey



Smoke Grey

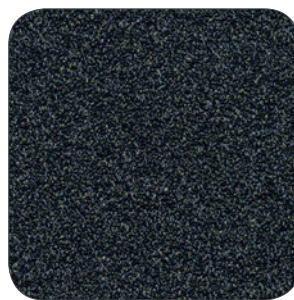
### PREMIUM



Beige Granite



Desert Dusk



Ebony Sand



Castle Oak

All colors and patterns shown are printed reproductions and may differ slightly from the actual product. Please refer to actual samples before specifying.

High pressure laminate is also available. Please contact your local representative for a brochure.

### A COMMITMENT TO OUR CUSTOMERS

As our ISO 9001:2000 certification would suggest, Spacesaver is dedicated to the highest standards of product quality. Equally important is our commitment to customer service, both before the sale and after.

Through our extensive network of local Area Contractors, Spacesaver provides a level of experience and competency that others simply do not. From architectural constraints and building codes to system design and floor-loading, we have the expertise to handle every issue and customer concern.

A storage solution that meets your unique criteria. Single-source turn-key project management. Certified system installation. Ongoing maintenance and support. Spacesaver sets a standard of professionalism, performance and responsiveness that is unmatched. We live up to our customer commitments and have the references to prove it.

You can rely on The Spacesaver Group.



Spacesaver Corporation  
1450 Janesville Avenue  
Fort Atkinson, WI 53538-2798  
1-800-492-3434  
[www.spacesaver.com](http://www.spacesaver.com)



KI  
1330 Bellevue Street  
P.O. Box 8100  
Green Bay, WI 54302-8100  
1-800-424-2432  
[www.ki.com](http://www.ki.com)

Spacesaver Corporation is a division of KI.

KI is a registered trademark of Krueger International, Inc.

Spacesaver is a registered trademark of Spacesaver Corporation.

© 2009 KI and Spacesaver Corporation. All Rights Reserved. Litho in USA. SC-9626 SSC/MRK 08/09



# Rigid Thermofoil

## OPTIONS

3D LAMINATE FINISHES

### TOP AND MID-MOUNT WORK SURFACES

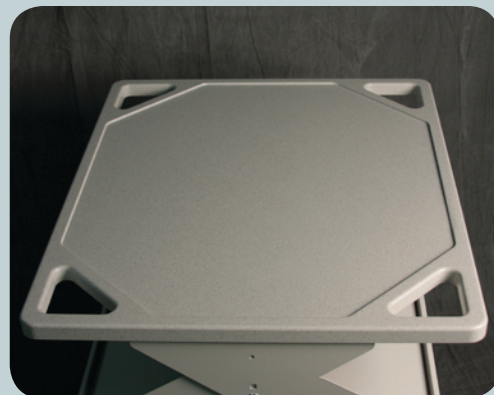
WRX Wheels™ Transport System

### RETRACTABLE WORK SURFACES

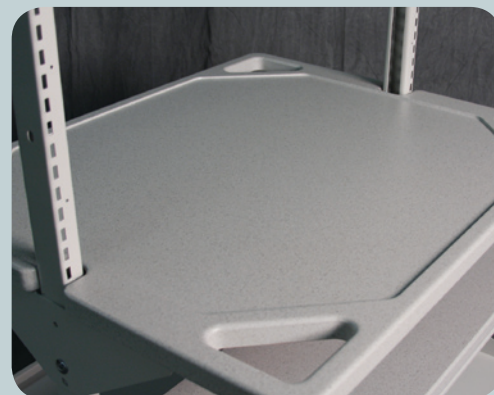
WRX Wheels™ Transport System  
FrameWRX™ Storage System

The dimensional flexibility and durability of RTF provide a seamless work surface with superior resistance to moisture and bacteria as well as marring, abrasion, impacts and staining. Available in a broad selection of patterns, it is easy to chose an attractive, complimentary, lasting finish – backed by a 5 year guarantee\* against delamination or surface discoloration.

TOP-MOUNT



MID-MOUNT



RETRACTABLE



SOLIDS



Glacier White  
(0114)



Parchment  
(0138)



Black Matte  
(0109)



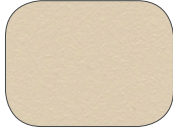
Cloud  
(0141)



Fog  
(0148)



Storm  
(0169)



Sandstone  
(0170)



Designer White  
(0212)

ABSTRACTS



Cashmere Fibers  
(4007)



Concrete Fibers  
(4008)



Fusion Jazz  
(4010)



Laguna Pebble  
(4023)



Grotto Mink  
(4026)



Diamond Plate  
(4031)



Carbon Fibers  
Silver (4018)



GlaStone Geode  
(4029)



Restoration  
Bronze (4030)



Micro Camo  
Black (4032)



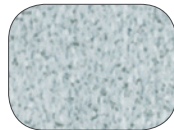
Studio White  
Dust (4033)



GlaStone Ash  
(4034)



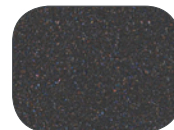
Micro Camo  
White (4035)



Vista Bay  
(4036)



GlaStone  
Cambrian (4037)



Shark Grey  
(6005)



Platinum 2  
(6006)

STANDARD COLORS

WOODGRAINS



American Natural  
Maple (2028)



Hayward Cherry  
(2034)



Solara Oak  
(2062)



Maplewood  
(2063)



Amati Walnut  
(2064)



Clove  
(2065)



Crossfire Java  
(2066)



Mocha  
Cherry (2077)



Majestic Walnut  
(2102)

PREMIER



Vintage  
(0203)



Brushed Steel  
(6010)



Spacesaver Corporation  
1450 Janesville Avenue  
Fort Atkinson, WI 53538-2798  
1-800-492-3434  
www.spacesaver.com

\*See Northern Contours' 5-year Certificate of Warranty for details.