

# Patriot™

Gear and Turnout Lockers



[www.pencoproducts.com](http://www.pencoproducts.com)



# Readiness Done Right!

## Penco Lockers

Penco Products, Inc is a leader in the design, engineering and fabrication of storage products and accessories. With over 135 years of experience manufacturing metal storage products, our products are built to the highest standard of fit, finish and function.

When it comes to lockers, Penco offers the broadest range of steel and plastic lockers. From custom built corridor lockers for schools to employee lockers for a wide variety of industries, we engineer each product to fit its intended use.

All Penco lockers are manufactured in the United States at one of two modern plants. Our east coast facility in Hamilton NC and western location in Salt Lake City boast a combined 850,000 square feet of manufacturing capacity and are located within 500 miles of 40% of the US population.

Both facilities employ modern metal working equipment and state-of-the-art powder coat paint systems to deliver a product that is second to none.



Cover Image: Coast Guard installation of Patriot Gear lockers equipped with optional single door and recessed handle. Only available on 24" wide Gear Lockers.



# Patriot Lockers

## Defined

Double doors and a cremone-style turn handle are standard equipment on all Gear models.



Add a lockable security box for securing important documents, a laptop or personal property.

Choose from more than a dozen accessories to design a locker that is custom tailored to the user and the application.

A wide variety of shelving configurations make each Patriot Locker a custom fit.



The cremone turn handle as seen from locker front.

Organize miscellaneous items or file important papers in the Patriot's optional drawer units. Heavyweight, ball bearing extension glides ensure smooth, durable operation.

**Readiness takes many forms, and so does the Patriot. The pages that follow will show you readiness done right.**



### **Patriot Gear and Turnout Lockers**

In response to the needs of first responders everywhere for heavy duty, purpose-built storage, we are proud to offer a special line of lockers designed with the unique demands of armed forces personnel and emergency response professionals in mind.

The Patriot Line is a mission-specific group of tactical locker products with a load of upgraded accessories. They are designed to serve and designed to last.

Patriot Lockers start with heavy gauge, cold rolled steel and are painted using a durable yet attractive powder coat finish. Working from that solid foundation, we've designed premium knocked down and fully welded 24", 30", 36", 42" and 48" wide lockers and a list of accessories that allow the locker to be fitted out for any kind of duty.

### **Patriot Gear Defined**

Each Gear locker is equipped with full height doors and a robust turn handle to lock down important tactical equipment and protect personal items.

### **Patriot Turnout Defined**

Turnout lockers come with open fronts for split-second access to flight or emergency equipment that can be as Spartan or heavily accessorized as duty requires.



# Patriot KD

## Turnout Locker

### **KD Turnout Locker with Center Partition and 24 inch Security Box**

Whether you need maximum security for mission critical equipment, optimum ventilation for uniforms and outerwear with a minimum of lockable personal storage, or a combination of both, the Patriot Line delivers. All models are equipped with a sturdy full width shelf located 12” below the top to provide ample storage for protective head gear. A chrome plated 1 inch dia. coat rod and heavy-duty coat hooks ensure exceptional hanging capacity below.

Adding a center divider allows you to split your storage between uniforms or PPE and civilian clothing storage. For more flexibility, combine several half shelves with a divider and locking compartment and there’s plenty of room to lock up your laptop, side arm, and personal items like a billfold, cell phone and keys.

When your gear or equipment cases are best protected when stowed horizontally, or you just need general purpose high density storage, substituting 4 full width shelves for the divider gives you a total of six levels for boxes, binders or packaged supplies.

The 36” wide Turnout unit pictured is configured for multi-purpose storage, with free access to tactical gear, with free access to tactical gear, with free access to tactical gear, with free access to tactical gear.





# Patriot Welded Turnout Locker



## Welded Turnout Locker with Foot Locker

The key to any turnout locker is the ability to grab and go when the call comes in. Penco's Patriot line is the heavy duty answer for fire fighting, Hazmat, EMS or flight preparedness.

The protective equipment used by many emergency services needs to be ready for deployment at all times. More importantly, the proper storage of that equipment can not only make a difference in how long it lasts but also how well it protects. The open front Turnout locker makes readiness a reality by allowing PPE to hang freely in the open body of the locker while still providing seating and lockable bulk storage in the footlocker.

As a flight locker, the Patriot Turnout provides ample space for a helmet and other items on the upper shelf. The hanging area underneath can be outfitted with an optional heavy duty parachute rack or additional 7/8 inch wide wall hooks that can accommodate flight harnesses or survival vests.

Penco lets you design your Turnout locker with as much or as little as it needs to get the job done. And if you're struggling with a room layout with limited space, the Turnout models can be fitted with a center divider and two coat rods to accommodate two users per locker.



# Patriot KD Gear Locker

## **KD Gear Locker with Center Partition, Shelving, Security Box and Drawer Unit**

The Patriot Line adds a new twist to the standard Penco locker by introducing a series of storage drawers that fit inside the locker. This design frees up valuable floor space in front of the locker when the drawer is not in use and features vertical dividers that permit you to create compartments or just use the drawer to stow bulky items like shoes or patrol bags.

The drawer system features an integral full-width pull and heavy duty ball-bearing glides. To save room in tight quarters, combine the drawers with an available seat to open up the area in front of the lockers.

The range of locker widths and accessories in the Patriot Line makes planning lockers for any line of security or emergency service easy. The locker in the photo features a 24" wide security compartment that has room for everything from toiletries to pepper spray and with its full shelf you can still stow a citation book, binder, clipboard and file folders.

An available clothing separator spaces uniforms, jackets and ballistic vests for better air circulation. Two different sizes of storage compartments, available drawers, heavy duty hooks and a sheet metal document pocket can be added to organize your gear for the next patrol.





# Patriot Welded Gear Locker



## **Welded Gear Locker with Center Partition and Open Lower Compartment**

A properly equipped double door Patriot Gear locker can be the ideal solution for a variety of specialized storage challenges. The ample storage areas at both top and bottom of the 36 inch wide model shown on this page still leaves almost 4 feet between the shelves for hanging uniforms and other gear.

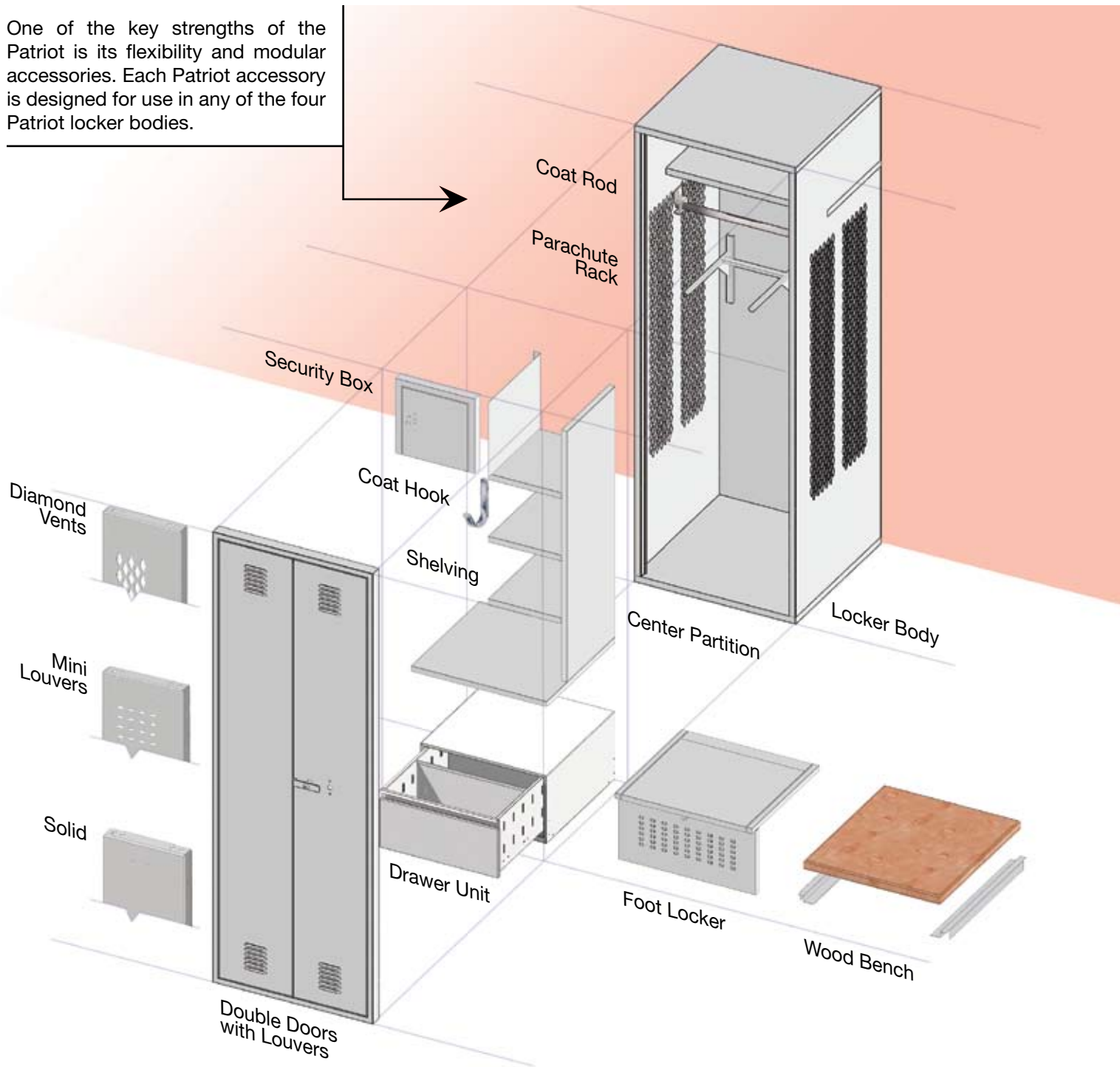
The double door format means even the widest lockers in the Patriot line have manageable doors that require half as much floor space as a single door to open.

The heavy duty turn handle supplied on all Patriot Gear lockers is designed to deliver, too. The handle itself is made from 3/16 inch thick steel strap and accepts a padlock. When turned, it engages the top and bottom frame members with a pair of 3/8 inch diameter steel locking rods.

In addition to the mirror and cell phone tray shown, you can outfit your Patriot with a second coat rod, extra hooks or clothing separator for expanded garment storage. Our optional 12 inch wide security compartment is perfect for personal items, while the 24 inch version includes a full width horizontal shelf that doubles the useable space so you can secure your notebook PC and still have room for files or binders.

# Configure and Build to Suit

One of the key strengths of the Patriot is its flexibility and modular accessories. Each Patriot accessory is designed for use in any of the four Patriot locker bodies.





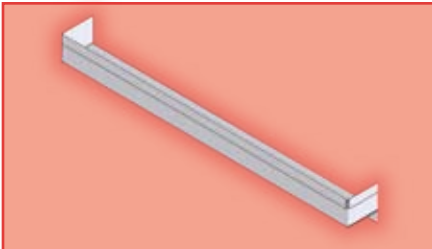
# Options and Accessories

## Security Box:

Available in either 15" or 24" wide configurations, the security box uses a 14 gauge lockable door, 16 gauge side panel and welded door frame to properly secure valuable equipment and personal items. The 24" model includes a full width shelf to double the usable storage area. Any standard box locker padlock or built-in lock can be used to secure the contents. (see page 8)

## Cell Phone/Key Tray:

The 8" x 2" x 2" tray is sized for organizing phones, radios or keys and can be attached to the optional Center Divider or to the door using the Accessory Mounting Panel.



## Hardwood Seat:

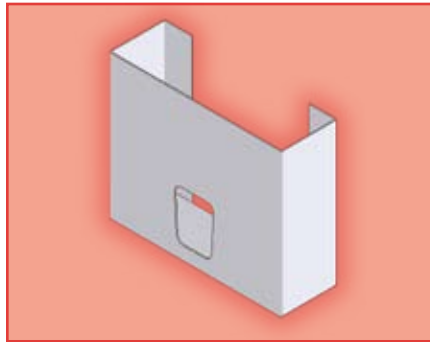
Used in place of a footlocker or drawers, the 1-1/4" thick full hardwood bench provides a sturdy seating surface with open storage underneath for stowing equipment. (see page 8)

## Footlocker:

The reinforced lid of the foot locker features a continuous hinge and also serves as a seat. The front panel includes a single point latch with padlock strike plate and mini louvers for security and ventilation. (see page 8)

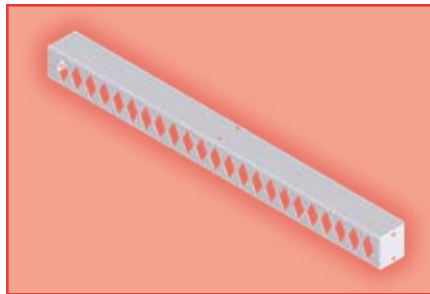
## Document Sleeve:

Formed from 16 gauge steel, the Document Sleeve is available in either a vertical or horizontal configuration for efficient storage of portfolios, note pads or binders.



## Garment Separator:

The 16 gauge steel channel attaches underneath the top shelf and uses diamond perforations to keep hangers from bunching together for improved ventilation.



## Drawer Unit:

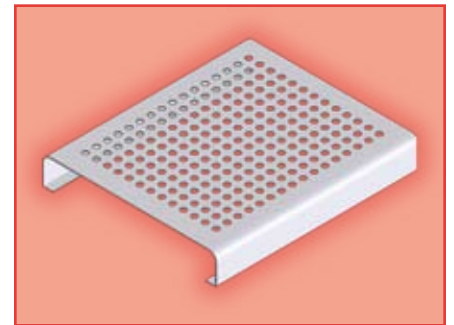
Mounted within the confines of the locker body, the steel drawer features full extension glides for easy access to files or equipment without taking up valuable space when not in use. The ball-bearing glides are rated at 250 lb. capacity for performance and durability. (see page 8)

## Parachute Rack:

Formed from 3/4 inch diameter, heavy wall steel tube and reinforced by 14 gauge gussets and supports for hanging heavy flight gear or body armor. Ordering this option replaces the standard heavy duty rear-mounted coat hooks. (see page 8)

## Boot Tray:

The 12" x 14" Boot Tray provides air space between soiled or wet footwear and the shelf or locker bottom. A series of round perforations are used to promote air flow and the tray is kept from marring the locker finish by rubber pads.



## Accessory Mounting Panel:

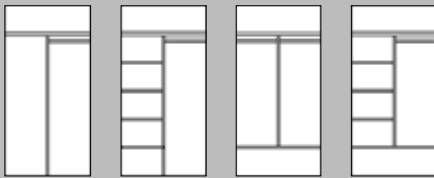
A 24 inch high panel formed from 16 gauge steel permits mounting several accessories to the door without drilling or using exposed fasteners.

## Additional Locker Accessories:

Standard Penco locker accessories such as vertical fillers, continuous slope hoods, locker room benches and recess trim are available for use on Patriot Lockers. See Penco price book for details.

# Sizes and Dimensions

The standard interior for any Patriot™ locker includes a full width shelf, a full width chrome plated 1 inch diameter coat rod and two heavy-duty coat hooks. Patriot Accessories are designed so you can select just what you need whether you opt for a Turnout or Gear locker in either KD or All-Welded construction.



Adding a center divider allows you to separate clean and soiled clothes or add half shelves to organize garments and create cubbies for miscellaneous items or equipment cases.



Gear and Turnout lockers can benefit from integrated seating and additional storage. Add either a hardwood seat or footlocker and even more storage with a 15 inch or 24 inch wide security box.



Heavy duty drawers can be ordered for use with a center divider or without to create seating.

\* All dimensions in the following tables are in inches and are subject to change without notice.

Patriot™ Locker Bodies							
KD (Knocked Down) Construction				All-Welded Construction			
Gear Lockers (WITH Doors)				Gear Lockers (WITH Doors)			
W*	D*	H*	Cat. No.	W*	D*	H*	Cat. No.
24	24	72	6KGDA00	24	24	76	6WGDA00C
30	24	72	6KGDA10	30	24	76	6WGDA10C
36	24	72	6KGDA20	36	24	76	6WGDA20C
42	24	72	6KGDA30	42	24	76	6WGDA30C
48	24	72	6KGDA40	48	24	76	6WGDA40C
Turnout Lockers (NO Doors)				Turnout Lockers (NO Doors)			
W*	D*	H*	Cat. No.	W*	D*	H*	Cat. No.
24	24	72	6KTDA00	24	24	76	6WTDA00C
30	24	72	6KTDA10	30	24	76	6WTDA10C
36	24	72	6KTDA20	36	24	76	6WTDA20C
42	24	72	6KTDA30	42	24	76	6WTDA30C
48	24	72	6KTDA40	48	24	76	6WTDA40C

NOTE: Patriot KD models are 72" high. Patriot All-Welded models are 76" high (72" plus a 4" channel base).

Accessories for Patriot™ Lockers									
Description	W*	D*	H*	Cat. No.	Description	W*	D*	H*	Cat. No.
Center Divider		15	58	6CPX269C	Drawer Unit	18	24	12	6ACXFF60C
		15	45	6CPX270C		24	24	12	6ACXFF61C
Half Shelves (For Use With Center Divider)	12	15		6SHX521C		30	24	12	6ACXFF62C
	15	15		6SHX522C		18	24	15	6ACXFF20C
	18	15		6SHX523C		24	24	15	6ACXFF21C
	21	15		6SHX524C		30	24	15	6ACXFF22C
	24	15		6SHX525C	18		12	6ACXAB80C	
Security Box (Mounts to Top Shelf)	15	12	12	6ACXAB98H	Drawer Dividers	24		12	6ACXAB81C
	24	12	12	6ACXAB99H		30		12	6ACXAB82C
Full Width Metal Bottom Shelf	24	24		6SHX530C		18		15	6ACXAB83C
	30	24		6SHX531C		24		15	6ACXAB84C
	36	24		6SHX532C	30		15	6ACXAB85C	
	42	24		6SHX533C	12			6ACXAB38	
	48	24		6SHX534C	15			6ACXAB39	
Acrylic Mirror	6		8	96370	Coat Rods 1" Dia.	18			6ACXAB40
Cell/Key Tray	8	2	2	60830H		21			6ACXAB41
Accessory Mounting Plate	12		24	6ACXFF10H		24			6ACXAB42
	15		24	6ACXFF11H		30			6ACXAB43
	18		24	6ACXFF12H		36			6ACXAB44
	21		24	6ACXFF13H		42			6ACXAB45
	24		24	6ACXFF14H	48			6ACXAB46	
Foot Locker	24	24	12	6ACXAB93H	Garment Separators	12		5	6ACXFF00H
	30	24	12	6ACXAB94H		15		5	6ACXFF01H
	36	24	12	6ACXAB95H		18		5	6ACXFF02H
	42	24	12	6ACXAB96H		21		5	6ACXFF03H
	48	24	12	6ACXAB97H		24		5	6ACXFF04H
Hardwood Bench Seat	24	24	1-1/4	6RQ1232BH		30		5	6ACXFF05H
	30	24	1-1/4	6RQ1234BH		36		5	6ACXFF06H
	36	24	1-1/4	6RQ1233BH		42		5	6ACXFF07H
	42	24	1-1/4	6RQ1235BH		48		5	6ACXFF08H
	48	24	1-1/4	6RQ1236BH		12	3	8	6ACXFF54C
Boot Tray	12	14		6ACXFF09	10	3	8	6ACXAB32C	
Coat Hook		2	3	6ACXAB37H	P'chute Hook		18		6ACXAB33C

Consult the Patriot locker price list for a complete list of options.



# 21 Designer Colors

## Three Paint Finishes



NOTE: Colors shown are as close to actual finishes as the printing process allows. Do not make your final color selection based on the color shade shown on this page. Penco Color Charts are available for a more accurate color match. Exposure to high humidity, chlorine salts, abrasive cleaners, germicidal cleaners and acids can damage the finish and will void the guarantee. For outdoor applications or other harsh environmental conditions, contact your Penco Representative.

### Standard Colors

To assure rust resistance and paint adhesion, all Penco lockers receive a state of the art pre-paint conditioning that includes a thorough cleansing by a hot spray washing process, then a coating with a special phosphate film for resistance to corrosion and improved paint bond strength.

Lockers are available in the 21 colors shown above. All Penco locker doors, frames and body parts are painted the same color, as standard. Two-tone color combinations are also available at no extra charge. Contact your Penco sales representative for complete information.

### Standard Powder Coat Finish

Penco's standard 1 mil thick paint finish is perfect for most applications. The paint surface is tough and durable and offers a beautiful drip-free surface, excellent edge coverage and environmentally friendly application.

### PowderCoatPlus™

PowderCoatPlus is an optional cost-effective way of improving the durability and rust resistance of steel lockers. After a specialized cleaning and pre-treatment of the steel, a 2 mil thick coating of powder coat enamel is applied and baked onto the steel surface (an effective alternative to galvanized steel).

### X-Off™ Anti-Graffiti Paint

Penco's optional X-Off Anti-Graffiti Paint provides a surface coating that allows easy removal of graffiti with alcohol and water. This specially formulated paint has a tight molecular structure that completely seals the locker surface, preventing graffiti and corrosive agents from penetrating the finish.



Supplies needed:  
99% isopropyl alcohol, water, cleaning cloths, eye and hand protection.

# Specifications

## Knockdown Build

**Heavy Duty Lockers:** All locker body components made of cold rolled steel specially formed for added strength and rigidity and to ensure tight joints at fastening points.

**Locker Body:** Sides, Bottoms, Tops, and Shelves: 16 gauge steel. Sides punched for shelf locations on nominal 12 inch centers.

**Backs:** Solid 18 gauge steel.

**Sides:** 16 gauge sheet steel with 3/4 inch (19mm) wide by 1-1/2 inch (38mm) high diamond-shaped perforations.

Optional: solid sides without ventilation.

**Tops and bottoms:** Three sides formed 90 degrees, the front offset formed to be flush with horizontal frame member.

**Shelves:** Flanged on four sides formed to 90 degrees, front edge having a second bend.

**Frame:** Vertical frame member to be not less than 16 gauge formed to a channel shape and hemmed to create a smooth interior edge. Intermembering parts to be mortised and tenoned and electrically welded together in a rigid assembly capable of resisting strains.

Hole Spacing in Locker Body Construction: Not exceeding 9 inches (225 mm).

**Assembly hardware:** Zinc plated truss fin head bolts and hex nuts

Optional factory assembly of locker bodies using rivets.

### Interior Equipment

**Shelf:** 16 gauge full width located approximately 12 inches (304.8 mm) below top of locker.

**Hooks and coat rod:** Two heavy duty 3 inch high, 7/8 inch wide 2-1/2 inch deep single-prong wall hooks and one chrome plated 1 inch diameter coat rod.

### Fabrication

Fabricate lockers square, rigid, without warp, with metal faces flat and free of distortion.

**Knock-Down Lockers:** Fabricate lockers on the unit principle, each locker with individual face frame, individual top, bottom, back, and shelves, with two sides forming one complete unit. Verify dimensions and arrangement before fabrication.

**Finish:** Finish coat shall be electrostatically applied powder coat enamel properly cured

to paint manufacturer specifications to achieve optimum performance. All lockers shall be painted inside and outside with the same color.

**Powder Coat:** Dry Thickness: 1 to 1.2 mils (0.025 to 0.03 mm).

**Color:** As selected from manufacturer's standard colors.

### Gear Lockers – Same as above with the following substitutions and additions:

**Doors:** One piece 14 gauge sheet steel. Standard Ventilation: 6 inch (152.4 mm) wide by 3/4 inch (19 mm) high horizontal louvers arranged two groups of six.

Optional Ventilation: 3/4 inch (19 mm) wide by 1-1/2 inch (38 mm) high diamond-shaped perforations or 3/4 inch (19 mm) by 1/4 inch (6.4 mm) high security mini louvers. Solid doors

**Door frames:** 16 gauge formed in a channel shape with continuous vertical door strikes.

**Hinges:** Continuous type: 16 gauge piano hinge measuring full height of door. Welded to door and attached to locker frame using steel rivets.

### Door Handles and Latching

**Cremona Latching:** Handle shall be a heavy duty turn handle that secures the door at three points. The top and bottom frames are engaged with 3/8 inch (9.5 mm) steel rods, and a 1/8 inch (3 mm) thick center latch engages at the side. Double door configurations shall consist of a left hinged door secured its full length by the right hinged door when latched. Handle assembly shall be secured to door using a threaded lock nut to facilitate adjustment and removal for repair if necessary. Welded handle assemblies shall not be accepted.

**Single Point Latch:** 24" wide single door only. Recessed handle with integral pull and 11 gauge steel hasp welded to locker frame.

**Multiple Point Latch:** 24" wide single door only. Recess finger-lift control handle in door, positive automatic type latching, whereby locker may be locked when open, then closed without unlocking.



# Specifications

## All-Welded Build



**Heavy Duty Lockers:** All locker body components made of cold rolled steel specially formed for added strength and rigidity and to ensure tight joints at fastening points.

**Locker Body:** Sides, Bottoms, Tops, and Shelves: 16 gauge steel.

Sides punched for shelf locations on nominal 12 inch centers.

**Backs:** Solid 18 gauge steel.

Groups to 48 inches (1.219 m) wide: One piece back.

Groups over 48 inches (1.219 m) wide: Two piece back.

**Frame,** 16 gauge formed in a channel shape with hemmed edge.

**Sides:** 16 gauge sheet steel with 3/4 inch (19mm) wide by 1-1/2 inch (38mm) high diamond-shaped perforations.

Optional: solid sides without ventilation.

**Tops:** Notched and formed sheet; one continuous flat top for each group of lockers.

**Channel Base:** Notched and formed sheet; one continuous bottom for each group of lockers, suitable for anchoring to wood or concrete bases. Adds 4 inches to the overall height of locker.

**Shelves:** Flanged four sides with additional return flange on front edge to increase strength.

### Interior Equipment

**Shelf:** 16 gauge full width, located approximately 12 inches (304.8 mm) below top of locker.

**Hooks and coat rod:** Two heavy duty 3" high, 7/8" wide 2-1/2 inch deep single-prong wall hooks and one heavy duty chrome plated 1 inch diameter coat rod.

### Fabrication

Fabricate lockers square, rigid, without warp, with metal faces flat and free of distortion.

**Finish:** Finish coat shall be electrostatically applied powder coat enamel properly cured to paint manufacturer specifications to achieve optimum performance. All lockers shall be painted inside and outside with the same color.

**Powder Coat:** Dry Thickness of 1 to 1.2 mils (0.025 to 0.03 mm).

**Color:** As selected from manufacturer's standard colors.

### Gear Lockers – Same as above with the following substitutions and additions:

**Doors:** One piece 14 gauge sheet steel. Standard Ventilation: 6 inch (152.4 mm) wide by 3/4 inch (19 mm) high horizontal louvers arranged in two groups of six.

Optional Ventilation: 3/4 inch (19 mm) wide by 1-1/2 inch (38 mm) high diamond-shaped perforations or 3/4 inch (19 mm) wide by 1/4 inch (6.4 mm) high security mini louvers. Solid doors.

**Door frames:** 16 gauge formed in a channel shape with continuous vertical door strikes.

**Hinges:** Continuous type: 16 gauge piano hinge measuring full height of door. Welded to door and attached to locker frame using steel rivets.

### Door Handles and Latching

**Cremona Latching:** Handle shall be a heavy duty turn handle that secures the door at three points. The top and bottom frames are engaged with 3/8 inch (9.5 mm) steel rods, and a 1/8 inch (3 mm) thick center latch engages at the side. Double door configurations shall consist of a left hinged door secured its full length by the right hinged door when latched.

Handle Assembly shall be secured to door using a threaded lock nut to facilitate adjustment and removal for repair if necessary. Welded handle assemblies shall not be accepted.

**Single Point Latch:** 24" wide single door only. Recessed handle with integral pull and 11 gauge steel hasp welded to locker frame.

**Multiple Point Latch:** 24" wide single door only. Recess finger-lift control handle in door, positive automatic type latching, whereby locker may be locked when open, then closed without unlocking.

# Penco

## Storage Products



### Industrial Shelving

Penco Products manufactures a wide variety of shelving products.

Clipper® and Erectomatic® Hi-Performance® shelving feature adjustable strong box beam shelves and post systems capable of supporting high-rise and multi-level installations. Wide Span shelving specializes in storing goods that are wide, high and bulky with extreme ease of assembly. RivetRite® boltless shelving's simple design offers an economical solution to most storage problems, from the small back room to the multi-level archive storage system.



### Pallet Rack

Penco pallet rack is a carefully engineered system designed to provide highly efficient storage of palletized items. High strength steel and efficient design achieve a superior strength-to-weight ratio that makes Penco Rack one of the best values for your storage dollar. A wide range of sizes, capacities and accessories enables Penco pallet rack to handle virtually any job you can give it.



### Shop Furniture

Penco's products in the Shop Furniture line can make your work environment more comfortable and efficient. Various configurations of work benches, carts and stools can be combined to help organize any work area for maximum productivity.



### Lockers

Penco Vanguard™ Lockers have been a standard in the industry for decades. They have spawned many other locker models suitable for school corridors, athletic teams, employees, health clubs and hospitals. These include Guardian™, Invincible™, Stadium®, All-Welded, Angle Iron, ProTough® and the SmartLockers® electronic locker system. Penco steel lockers are beautifully finished in powder coat enamel in 21 decorator colors.

Penco also has plastic lockers. They are an exclusive Penco design manufactured from high density polyethylene (HDPE) which is rust proof and resistant to most common chemicals and cleaners. They are available in 7 standard colors. Many sizes of Penco lockers are available on a QuickShip basis from our strategically located warehouses.



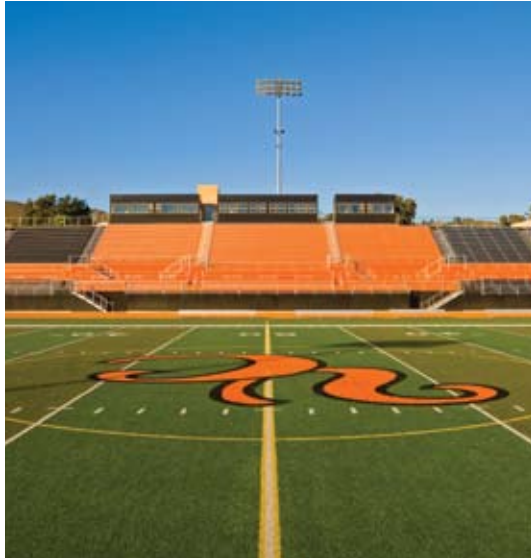
### Storage Cabinets

Penco's E-Z Bilt Cabinets are an ideal solution to storage needs in offices, plants, schools and institutions. The contemporary design and attractive powder coat baked enamel finish is compatible with any decor. Design features include a recessed handle with built-in lock and two keys. Available in several models and sizes.



# Metal Fabrication Group

## Corporate Information



### Industrial Manufacturing Company (IMC)

The parent company of Penco and its affiliates in the Metal Fabrication Group is Industrial Manufacturing Company (IMC). IMC and its international arm, IMCI, are a proud family of companies that produce a wide variety of innovative products for industry. With more than 3,500 employees and 30 worldwide manufacturing, sales and distribution facilities, it produces aircraft and aerospace ducting systems, gears, lubrication systems, bleachers, steel and plastic lockers, storage systems, steel mezzanines, high-performance strainers, car and truck components, industrial hoses and industrial expansion joints.

Although each IMC and IMCI company operates independently, common to all of them is a profound respect for the integrity of established industrial principles and a practical openness to applications of new technology. With individual histories spanning decades – and in two cases more than a century – the IMC and IMCI companies are time-tested leaders in their national and global markets.

Each IMC and IMCI subsidiary strives to tailor its products and services to the wishes of its customers, and each company's success has been built on the development of enduring customer relationships. They take pride in providing not only products of consistently high quality, but also in

flexible and responsive service and in realistically competitive prices.

### Schmidt Structural Products, Inc.

For over 40 years, Schmidt Structural Products, Inc. (formerly W.A. Schmidt) has designed, manufactured and installed structural steel mezzanines to vertically expand floor space quickly and economically. A mezzanine can double or even triple existing space at up to 80% less than the cost of a building addition. Visit [www.schmidtstructural.com](http://www.schmidtstructural.com)



### All Star Bleachers, Inc.

For more than 50 years, All Star has been a leading designer and manufacturer of bleachers and grandstands for indoor and outdoor seating applications. All Star takes pride in providing products of consistently high quality, responsive service and realistically competitive prices. Products range from a simple team bench to a grandstand that meets the VIP seating requirements of a NASCAR race. Visit [www.allstarbleachers.com](http://www.allstarbleachers.com)



www.pencoproducts.com



Stack it, Store it, Secure it.

Established in 1869, Penco Products, Inc. is based in Skippack, PA with manufacturing facilities in North Carolina and Utah. Penco is a leader in the design and fabrication of a wide spectrum of storage products ranging from industrial shelving, pallet rack and work benches to lockers for every need.

Penco's products are available through a nationwide network of distributors, serviced by a team of District Sales Managers. Penco's mission is to provide customers with value in the form of the finest storage products available. Whether you need to Stack it, Store it or Secure it, you can put the load on Penco.



**Corporate Headquarters**

2024 Cressman Road  
Skippack, PA 19474  
800.562.1000

**Manufacturing Facilities**

*Eastern United States*

North Carolina Plant  
1301 Penco Drive  
Hamilton, NC 27840

*Western United States*

Utah Plant  
4080 West Farm Road  
Salt Lake City, UT 84088

**QuickShip Distribution Centers**

*Northeast*

Pennsylvania QuickShip  
3820 Hempland Road  
Mountville, PA 17554

*Southeast*

North Carolina QuickShip  
1301 Penco Drive  
Hamilton, NC 27840

*South*

Tennessee QuickShip  
5355 Distriplex Farms Drive  
Memphis, TN 38141

*Texas*

Texas QuickShip  
6615 Roxburgh, Suite 200  
Houston, TX 77041

*West*

Utah QuickShip  
4080 West Farm Road  
Salt Lake City, UT 84088



**PENCO PRODUCTS, INC.**    PHONE: 800-562-1000 • FAX: 800-248-1555 • E-MAIL: general@pencoproducts.com

